

THE PARISH MAGAZINE
Ashford in the Water
and Sheldon
June 2025

ASHFORD SERVICES

Sunday 01 June Easter 7 **9.30am:** Morning Worship

Sunday 08 June Pentecost (Whit
Sunday) 9.30am: Morning Worship

Sunday 15 June Trinity Sunday 9.30am: Patronal
Festival Sung Eucharist

3.00pm Well Blessing Service led by The Rt. Revd.
Malcolm Macnaughton,

Bishop of Repton followed by the procession to bless the wells.

Sunday 22 June Trinity 1 9.30am: Sung Eucharist

5.30pm: Festival Closing Service

Sunday 29 June Peter & Paul Apostles **10.30am: Benefice Eucharist Sheldon**
No service in Ashford



**Please note that going forwards all services in Ashford will start at 9.30am
and every 5th Sunday the Benefice services in the 7 Benefice churches will
start at 10.30am**

Funeral 8th May – Rodney Palmer

A prayer for Trinity Sunday:

**Holy God,
faithful and unchanging:
enlarge our minds with the knowledge of your truth,
and draw us more deeply into the mystery of your love,
that we may truly worship you,
Father, Son and Holy Spirit,
one God, now and for ever.
Amen**

ASHFORD-IN-THE-WATER

2025 Flower Festival and Well Dressing Details

Contact for more information:

Ian Pykett • 07985 042 392 • i.pykett@btinternet.com

Ashford-in-the-Water's **Well Dressings** and **Flower Festival** run concurrently from **Saturday June 14 - Sunday June 22 2025**.

- **Six** wells to be dressed.
- **Flower Festival** at Holy Trinity Church, Ashford-in-the-Water, DE45 1QG, 10.30 am - 7.00 pm daily. The theme is "Derbyshire Folk".
- **Puddling** of Clay into Well Dressing Boards: Sheepwash Bridge, Ashford-in-the-Water, DE45 1QF, Friday June 6, approx. 5.30 pm.
- **Petalling** of Well Dressing Boards at the War Memorial Institute, Ashford-in-the-Water, DE45 1QB, Saturday June 7, 2025 - Friday June 13. Visitors welcome!
- **Well Dressings in place for viewing around the village:** Saturday June 14 - Sunday June 22. **Runs concurrently with Flower Festival in Holy Trinity Church.**
- **Sheepwash Demonstration** at Sheepwash Bridge, Ashford-in-the-Water, DE45 1QF, Saturday June 14, approx. 3.00 pm.
- **Well Blessing Service and Sermon at the Old Preaching Cross** by Rt Revd Malcolm Macnaughton, Bishop of Repton: Holy Trinity Church, Ashford-in-the-Water, DE45 1QG, Sunday June 15, 3.00 pm
- **Village Parade and Blessing of the Wells** with Youlgreave Band. Starts at Holy Trinity Church, Ashford-in-the-Water, DE45 1QG, Sunday June 15, 3.30 pm.
- **Talk** by Ian Pykett: "Ashford's Notable People". Wednesday June 18, 7.00 pm. Holy Trinity Church, Ashford-in-the-Water, DE45 1QG.
- **Matlock Band** at the War Memorial Institute, Ashford-in-the-Water, DE45 1QB, Sunday June 22, 2.00 pm - 4.00 pm.
- **Closing Service of Thanksgiving** at Holy Trinity Church, Ashford-in-the-Water, DE45 1QG, Sunday June 22, 5.30 pm.

YOUR VILLAGE NEEDS YOU! 📢

Ashford-in-the-Water Welddressings 2025

Helpers needed:

Saturday June 7th – Friday 13th

Petalling in the WM Institute (beginners welcome!)

Sunday June 15th, Saturday 21st & Sunday 22nd

Serving teas in the WM Institute 11am - 4pm

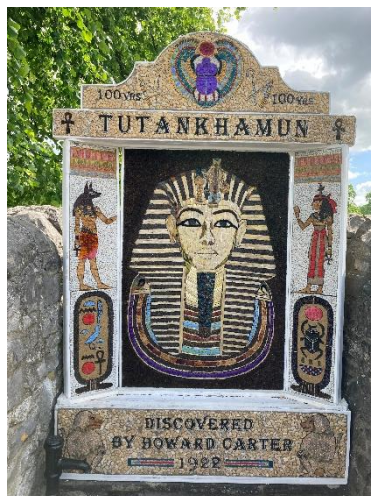
Saturday June 14th & Sunday 15th

Saturday 21st & Sunday 22nd

Car park duty in the Hall Orchard 11am - 4pm

**To sign up or for more details please contact Sarah Brocklehurst
07974914954**

Thank you!



FLOWER FESTIVAL

PLEASE CAN YOU HELP?

14th – 22nd June

Open daily 10.30am – 7.00pm

This year's theme for the Flower Festival is: 'Derbyshire Folk' showcasing the many varied talents of people born or associated with Derbyshire.

As many of you will know, in the past we have had thousands of visitors coming to see the spectacular arrangements in the church and we have always had two stewards on duty throughout the day to welcome them, hand them a leaflet describing the arrangements and to look after the card stall and candles. The day is divided into 1½ hours slots starting at 10.30am and it is very satisfying to welcome people and hear the lovely comments that people make about the arrangements. We would be most grateful if you could help us by covering one or maybe two slots during the week? You don't need to be a member of the church to do this and I will be on hand to show you the ropes.

Thank you to those of you who have already signed up to act as stewards but there are still a few gaps on the rota. If you would like to help welcome visitors into church, please do sign up on the blue stewarding rota which is on the table by the door in church.

Thank you! Linda



Dear Friends

On the 8th June the Feast of Pentecost is celebrated by many Christian denominations across the world. It comes at the end of Easter and fulfils Jesus' promise to his followers that he would not leave them comfortless after his return to heaven. The Feast recalls the pouring out of God's energy, light and power upon all who were gathered together in the form of wind and flame. It was both a mystical and exhilarating moment of transformation, renewal, reassurance and birth.

God's Spirit of love, direction and power transformed fearful followers into bold witnesses and continues to breathe life into the people of God, the Church today, as well as into the lives of those who search for God. The Spirit gives gifts to each person of wisdom, courage, love, humility, gentleness and strength, for the building up of the body of Christ, service to the needy in the world, and a framework of justice, peace, compassion and love for ourselves, and our neighbour.

Our celebration comes at a time of transition for us as a parish and as a benefice of seven churches with my retirement as parish priest. It has been a true joy to share my ministry



as the Vicar of Holy Trinity and the privilege of being able to minister with the congregation as well as during times of parishioners joys, moments of sadness and loss, and in times of searching for spiritual comfort and direction.

Thank you for your love, friendship, welcome, prayer and support over the years and for the lovely farewell and gift that I received from the church community last August and the warmth of the send off at my last services at church.

My prayer is that the vacancy will not be longer than is necessary, with the outcome eventually of the appointment of a Vicar who will build on the best of the past, develop the vision for the parish that will be worked on during the vacancy, and to be a person who loves, encourages and shares the love of Jesus Christ with you.

Through God's Spirit new gifts, new voices, and new growth can come through this period of transition, supporting the leadership of John and Ian, the Churchwardens of Ashford Church, and those who and pastor and minister within the church and parish. As you continue to support and care for each other as a church and community, continue to be outward facing, inclusive, caring and welcoming.

We rejoice in the forthcoming Village Well Dressings and Blessing, and the Flower Festival in church that are both highlights of the year and enjoyed by all who visit. This year hopefully Bishop Malcolm won't be preaching amidst thunder and lightning on the 15th June!

Let us not fear the future, but ensure that we are very much part of it. Look back with love and thanksgiving to God for what has been, and look **ahead** — with hope. Walk confidently into the next chapter, not afraid, but **expectant** because the story isn't over.

With love and prayers,

Tony

VE Day 80th Anniversary Commemoration



the 80th anniversary of VE Day. She said a prayer for all the injured and

On Sunday 11th May Archdeacon Nicky Fenton took our Service of Sung Eucharist and afterwards joined a sunny village gathering outside the War Memorial Institute to commemorate

fallen in the World Wars, and for all who have suffered through war, then and now. Institute Committee trustee Sarah Brocklehurst thanked those who had worked to provide refreshments, and trustee Mark Twelves spoke of the impact on Ashford and the wider United Kingdom of the two world wars:

'The Ashford War Memorial Institute was opened in 1931 and funded with a plot of former thatched cottages given by The Chatsworth Estate, and the then Duke and Duchess of Devonshire, and from money raised by subscription by the then members of this community to remember the horrors of WW1 and those that didn't come back.



Even small parishes like Ashford and Sheldon had a long list of the fallen, and it was a conflict that touched everyone, although it was almost wholly fought in foreign lands and at sea. Communication back home was also relatively limited.

My grandfather and uncle are named on the wall, and so this building means a lot more to me as well as being a wonderful village community gathering place. They both came back, so my family were much more fortunate than many others, but they were changed men.

Only eight years after this building was opened and twenty-one years after the end of WW1, our country and then empire and Commonwealth were at war again. But also a different war and a more mobile and modern war. Those at home could also listen and occasionally see the level of destruction in Europe and what was happening. That conflict soon came to Britain in the blitz, the Battle of Britain, a threatened invasion, and the home front. We were nearly starved into defeat, and it was a true fight for our nation's survival.



It is therefore hard for most of us to really imagine what Victory in Europe must have meant to people and just how palpable the relief must have been at

the news of peace in Europe and that many people could slowly start to return home to their families. Remember though, we were still at war with Japan.

When I was young, the church was packed on Remembrance Sundays with a generation that has now mostly gone, and today we pay tribute to them.'

A delicious spread of food and drink was provided afterwards in the Institute, with the opportunity for our village community to come together.

BAKEWELL TAE KWON-DO

The Martial art for Youngsters and Adults, Learning Self Defence, Getting Fit and Having Fun.

We train every Monday evening at the
A.W.M.I , Ashford in the Water
Juniors 6.30pm to 7.30pm
Adults 7.30pm to 8.30pm

We are a member of the Tae kwon-do
Association of Gt Britain
(Supported by Sport UK)

Contact Mr Hilton (Instructor)
3rd Dan Black Belt
07808 130465
bakewelltkd@outlook.com
30 Years of Excellence
in the Bakewell area.

Ashford in the Water Parish Council

**For information about the
village and surrounding area,
and the activities of the Parish
Council, please visit**

<http://www.ashford-in-the-water-pc.gov.uk>



PEAK DISTRICT LAUNDRY



We are Based in Great
Hucklow, Derbyshire.

We dry clean & launder
a range of home
furnishings & clothing,
where possible we try
to accommodate all
requests.

*Delivery available to
your home or local drop
off point.*

*Eco-friendly products and packaging.
quality checking guaranteed on each and every wash!*



@peakdistrictlaundry



07931 493988



peakdistrictlinenandlaundry@gmail.com



Peak District Laundry



Mobile Gentlemen's & Boys' Barbers



Experienced & reliable.
At a time and place to suit
your busy life.

Teresa

TEL: 07974960209



The Joinery Workshop

(Derbyshire) Ltd.

- Quality, purpose made joinery
- Doors, windows, fitted furnishings
- Made to measure
- Traditional & contemporary
- Range of woods and finishes
- Estimate on request

01629 813633

07835238160

joineryworkshopltd@gmail.com

Or visit the workshop:
Hassop DE45 1NW

Brand New Class The War Memorial Institute

Ashford in the Water

Solo
Ballroom
& Latin Class

Every Tuesday
1.15pm / 2.00pm

Sheer
DANCE

Jenny Sheeran 07734914327

Drew's Garage

SERVICING, REPAIRS
and TYRES



Please Contact Andrew For
All Of Your Motoring Needs

07538441006

drewsgarage205@gmail.com

SHELDON- DE45 1QS



Drewsgarage

Rogation Sunday



Sunday May 25th was Rogation Sunday, and a service was held in and outside Church, led by Revd Alan Griggs and Alison Fletcher, Agricultural Chaplains with the Derbyshire Rural Chaplaincy. We were also delighted to welcome members of the local farming community. William Cooper and Anne Greenhalgh read from Scripture, and prayers were led by John Davis from New Mexico, a ministry placement student with the Diocese of Sheffield, on attachment to Derbyshire Rural Chaplaincy.



Rogation Sunday is the day when the Church has traditionally offered prayer for God's blessings on the fruits of the earth and the labours of those who produce our food. The

word 'rogation' is from the Latin **rogare**, 'to ask'. Historically the Rogation Days (the three days before Ascension Day) were a period of fasting and abstinence, asking for God's blessing on a bountiful harvest. Fewer of us today directly derive our livelihood from the production of food, yet it is good to be reminded of our dependence upon those who do and our responsibility for the environment.

Traditionally, a common feature of Rogation days was the ceremony of beating the bounds, in which a procession of parishioners, led by the minister and churchwardens, would proceed around the boundary of their parish and pray for its protection in the forthcoming year. This year the (much-needed) rain held off and the procession was to the Churchyard and then the Hall Orchard, where there were readings and hymns, with views of the fields and hillsides.



The service was followed by a lovely spread of wine and food in Church, and the opportunity to meet and chat.

Farming News



There's one thing about farming - it certainly isn't boring and no two days are the same. We planted the maize last week at Hassop into extremely dry soil in readiness for this week's forecasted rain showers. All went well with instructions as usual from Neil to make sure the rows are straight as everyone can see it from the busy main road. Friday I had to dash into Chesterfield for outdoor chairs for the holiday cottages and thought I had had too much coffee as in the centre of the field was a glider!! Nobody was with it so thought I'd stop on the way back and get a photo for the archives. Unfortunately they had returned and pulled it to the roadside so now you will be able to note the maize rows are not very straight at all!

We lost a calf too last week with pneumonia. Although we look at them every day it soon takes hold in young calves, and was brought on by the hot days followed by very cold nights. It is so annoying but as usual you cannot dwell and must always look forward. Very hard to swallow though sometimes.

PUZZLE CORNER

Thanks to David Baldry
for supplying this
month's **Word Quiz**



1. What occurs once in a year and once in a century, but never in a day or a month?
2. Add one letter to each of these words to change them from one-syllable words to three-syllable words
CAME ARE SMILE
3. Can you make an anagram from this phrase that relates to it? THEY SEE
4. These words share a common future. What is it?
CALMNESS DEFT SIGH
ING CANOPY FIRST S
TUN
5. Can you make a related word from these two? MOON STARERS
6. What phrase is represented here? FLEWOLFECE
7. Which is the odd one out?
MILD CIVIC DILL CIVI
L LID DULL VIVID
8. Insert the vowels to find a well-known phrase
WSTNTWNTNT

Answers on last page.

PENROSE INTERIORS

DESIGN, STYLE AND QUALITY



Interior Design | Giftware & Accessories | Reupholstery | Headboards |
Curtains & Blinds | Wallpaper . Fabric . Paint | Poles & Tracks

A | Broomes Barns, Pilsley Lane, Chatsworth Estate, Nr Bakewell DE45 1PF

E | sales@penroseinteriors.co.uk W | penroseinteriors.co.uk

Opening Times | Monday - Saturday 10am - 5pm

Tel | 01246 583444

Chatsworth Plumbing & Heating Ltd

- **BOILER INSTALLATIONS & GAS SERVICING**
- **LANDLORD CERTIFICATIONS**
- **INSTALLATION OF SOLID FUEL FIRED CENTRAL HEATING OR HOT WATER SYSTEMS**
- **INSTALLATION OF OPEN FIRES & SOLID FUEL FIRED APPLIANCES**
- **UNDERFLOOR HEATING**
- **SOLAR HOT WATER SYSTEMS**
- **BATHROOM INSTALLATIONS**

Friendly, local and prompt service by qualified personnel.
Customer satisfaction a priority.

For a free consultation or quotation please phone:

Tel: 01629 733 188

Mobile: 07739 797 644



An Introduction to your local milk delivery service Bakewell Dairy

We can deliver all your milk, eggs and cream requirements.

We deliver Monday / Wednesday / Friday

Pint Bottled Semi Skimmed Milk (Peak District Dairy) 60p	Pint Bottled Whole Milk (Cox Brothers Great Longstone) 60p
Eggs ½ Dozen free range eggs £1.10	Pint Bottled Skimmed Milk (Peak District Dairy) 60p
Cream ½ pint Double Cream (Longley Farm) £1.20	Cream ½ pint Single cream (Longley Farm) £1.10
Fruit Yoghurts (Longley Farm) 38p	Pint Fresh Orange Juice 75p
1ltr Carton Orange Juice £1.10	1ltr carton Cranberry £1.10

Please contact Colin on Phone / Text 07711 900030

Email csjcolin@btinternet.com

Ashford WI

Last month's Ashford WI meeting fell on May 8th, and members entered into the spirit of the VE Day celebrations by dressing in 1940s outfits or the colours of the Union Jack, and by raising a glass to mark the 80th

anniversary of end of World War II in Europe. The Institute was decked out in flags, and fittingly, this 'walk down memory lane' was



accompanied by a fascinating talk about the Peak District in the early to mid-1900s. Using a series of old photos, newspaper cuttings, and reminiscences from those whose memories stretch back to that time, Tim Knebel, a Sheffield-based archivist and project officer at the community heritage group Peak in the Past, gave a vivid account of life in the Peaks during the Roaring Twenties through to the Warring Forties. Drawing on insightful and often humorous anecdotes, he touched on all aspects of social history, from the school room – where the threat of a good canning was omnipresent for a range of 'offences', be that idleness in the classroom or fighting in a

playground – to the challenges and dangers of the workplace; the basic living conditions in the home, and the central role played by local business and the church. Various community groups participated in a range of activities, sports and local traditions. Some, like Well Dressing are still thriving; others not so much. The annual crowning of the May Queen has largely fallen by the wayside. And competitions such as the Slippery Pole at the Bakewell Carnival – in which, as the name suggests, individuals were tasked with making it across the River Wye on a greasy pole – would definitely fall foul of Health and Safety legislation!

Tim talked about how the Peak District expanded from a place of work: in the mills, down the mines or on the railways, to one of recreation too, aided in the 1930s by the establishment of the first Youth Hostels in the region.

Established in former stately homes like Derwent Hall, Hartington Hall and Ilam Hall, they were widely acknowledged at the time to be the finest in the country.

Then came the Second World War, when 1000s of POWs were imprisoned in local camps, and bombs were stored along the side of the road.

Ashford in the Water featured several times in the talk, often courtesy of conversations the Peak in the Past team had with former

resident Nellie Blundell (nee Thorpe). A recording of Nellie's reminiscences can be heard on the Peak in the Past website

www.peakinthepast.com.

The competition - for the best local picture from the 1990s - was won by Pat who submitted a wonderful old picture of the Well Dressing next to the Sheepwash Bridge.



Also last month, a group of WI ladies enjoyed a trip to Lea Gardens near Matlock to see the rhododendron garden in bloom. It was a lovely sunny day and the flowers were spectacular!

And, at the end of April, two teams from Ashford took part in the annual Derbyshire Federal WI quiz at the Baslow Village Hall. Despite stiff competition from the other 17 teams, we put in a respectable performance with one of our tables managing 71 points; not bad considering the winning team, Walton WI, clinched the top spot with 79.

Next month's meeting will be held on June 5th at 7.15pm, at which Maggie Slingsby will give a talk about the History of British Pottery. The competition will be for the best example of British Pottery.

If you would like to join the Ashford in the Water WI, please email us on:

AshfordWI28@gmail.com New members are always very welcome.

SHELDON JOTTINGS



What an amazing Spring! The landscape looked wonderful in the sunshine which always seems to heighten the myriad of shades of green of the new leaves and the colours of the flowers at this time of year – even the walls gain an interest of their own. The blossom has been awesome although with the heat and dry weather some has been shorter lived than usual. Walking, cycling or driving out of the village has been a delight with the hawthorn blossom which has been exceptional, and the roadsides frothing with cow parsley.

But there has been something of a downside, the lack of rainfall has been difficult for the farmers who are hoping for rain so that their crops flourish. Gardens have suffered unless hosepipes, or in our case the watering can, has come to their assistance. The grass is not growing;

in our garden the lawn is a rather sorry brown mat and the lawnmower is languishing in the shed. Well you can't have everything and it has been a rather glorious Spring, the village and the countryside has been at its best for us to enjoy and remember in the years to come.

With Lindsey's departure as the Chair of the Parish Meeting after a very successful tenure, we have a new person in the post. Joe Melland has taken over the mantle and we have every confidence that his time as our Chair will be a success. As a Parish Meeting this is the only statutory post required and unlike other tiers of local and national government is the only one in which every householder has the right to vote on all issues - rather than only elected members having the power to vote – a true democracy! We all give Joe our full support and best wishes in his new post.

After some fifteen years writing 'Sheldon Jottings' for the Church Magazine, Bron and Brian have decided to hang up their pens, or rather close their computers and end their run as authors of these musings. We have thoroughly enjoyed the experience but feel that time, age and technology have finally beaten us. **If anyone would like to continue the tradition of Sheldon Jottings which has been a feature of**

the Church Magazine since its inception please let Bron or Brian know and we will happily provide them with details. We would like to thank Mary Stone, who compiles the magazine, for all her patience and efficiency and all those who have given us their support over the years with suggestions, topics and comments and send our very best wishes to you all. Keep smiling!

Very many thanks to Bron and Brian for their wonderful contribution to the magazine over the years. They have given us a vivid picture of the reality and beauty of life in the lovely village of Sheldon. We very much hope that someone else might step forward to continue their much-valued Sheldon Jottings.

Mary Stone

**Bakewell Oxfam
Secret Gardens
Sunday 29 June 2025 1pm to
5pm**

What better way to spend a summer Sunday afternoon than exploring some of the glorious gardens of Bakewell when they are at their best? This year the gardens are located in the old area of town around the magnificent parish church, and include The Butts, South Church Street, Monyash Road, Yeld Road and

The Yeld. The gardens vary in size and character, with interesting layouts and plant collections and many enjoy stunning views over Bakewell and the Wye Valley.

They feature: a row of quarrymens' cottages, a large terraced garden with a focus on fruit growing, a cottage and garden, circa 1800, and, for contrast, an interesting group of allotments on Monyash Road.

Derbyshire Well Dressings also open that weekend

Drinks and delicious home-made cakes will be available from 2pm in the Newark Room, along with jewellery and plant stalls.

£5 (CASH ONLY) gives entrance to all gardens and can be bought at Bath Gardens (main ticket sales), Bakewell Parish Church and Cornerways, 17 Calton View. Look out for the Oxfam balloons and banners.



For more information contact Sue on 07780798393 or Jenny on 07753326377

All proceeds will support the

work of Oxfam.

Photo by [K Soma](#) on [Unsplash](#)

BAKEWELL MEDICAL CENTRE

www.bakewellmedicalcentre.co.uk

01629 816636

Normal Surgery Opening Times:

Monday to Friday 8am to 6.30pm (unless it's a bank holiday)

We do not close for lunch.

Closed

The surgery will be closed for training at 1.30pm on the 2nd Wednesday of each month.

Whitworth Urgent Treatment

Centre at Whitworth Hospital is open from 8am to 8pm 7 days a week.

Please remember if you need to seek medical advice and the surgery is closed contact **111**.



HALL ORCHARD PLAYING FIELD RULES

- Dogs must be kept on a lead at all times - please clean up after your pet. This is enforceable by law.
- No glass receptacles.
- No hard ball sports are permitted (eg cricket, golf, baseball etc).
- No vehicle access without prior authorised permission from the Parish Council.
- No unauthorised memorials are allowed on the premises.
- No barbecues permitted.
- Play equipment is for children only – adult supervision is recommended, and appropriate measures are taken to ensure children play safely.
- Please use rubbish bins where provided.
- Use of all equipment is at your own risk.
- Cemetery rules to be followed – see website for details.
- Please report any damage to the Parish Council.
- Event or group activities require prior permission from the Parish Council.
- No unauthorised marquees.
- Antisocial behaviour including shouting, swearing and intimidation will not be tolerated and may be reported to local authorities.
- Please respect wildlife and natural areas.

These rules are in place to ensure safety, respect and enjoyment for all. For clarification or to report damage, please contact us via the website.


Thank you for your co-operation.

Ashford -in-the-Water Parish Council

www.ashford-in-the-water-pc.gov.uk

WYEGARTH ELECTRICAL SERVICES

For All Your Electrical Needs



Full Rewires
Extra Lights/ Sockets
Garden Lighting
Electrical Problems?

Call for your
FREE estimate
today

Serving the local community for over 30 years.
For a reliable, Friendly service

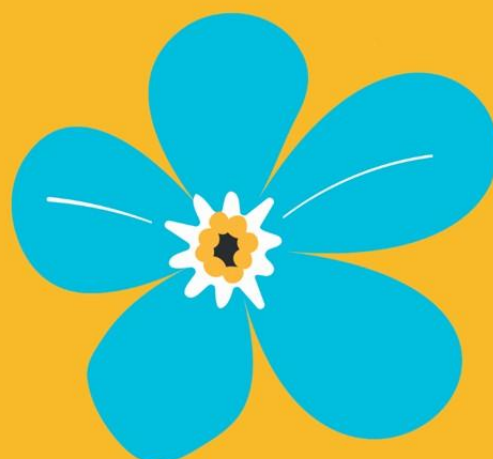
Office:01629814085

Mobile:07971786258

Email:wyegarthelectrical@gmail.com

Join us on Facebook





MHA Communities Derbyshire Peaks & Dales

Forget me nots



Are you or someone you know
living with dementia or memory
loss?

Join us for friendship and
support.

**£3 per
session**



Bakewell Methodist Church

First Wednesday of the month, 2-4pm

Tideswell Fountain Square Church

Second Wednesday of the month, 2-4pm

Hathersage Memorial Hall

Third Wednesday of the month, 2-4pm

For more info or to become a member please contact Derbyshire Peaks & Dales on
07934603926 or email: derbyshirepeaksanddales@mha.org.uk

Baslow Health Centre – Church Lane, Baslow

www.baslowhealthcentre.co.uk

Appointment Times: Clinicians are still available for consultations and medical advice. Please contact the surgery and a GP or Nurse will call you back to discuss your concerns and if necessary arrange to see you in person. Many problems can be dealt with over the telephone.

Patient Online: Have you registered to use the online service? This allows you to book or cancel appointments online (during normal service) and order your repeat medications. You can also request access to your Summary Care Record, and Detailed Coded Data contained within your medical records. You can also look at your test results.

Telephone Numbers:

Reception: 01246 582216 District Nursing Team: 01332 564900

Health Visitor: 01246515100

Normal Surgery Opening Times Monday, Tuesday, Wednesday, Thursday & Friday 08:00am to 6.30pm, (Closed Bank Holidays) (*Phones 8.00am – 6.30pm Mon to Fri*)

Ordering Repeat Medication - You can order repeat medications in the following ways:

- In writing or with our on-line access service
- Return your repeat request form to surgery by Post

Please allow three working days before collection and collect between 8am and 5pm

Prescriptions can be collected from reception inside the surgery.

Samples – if you need to leave a sample with us, please ensure it is labelled with your name and date of birth and returned in a bag if provided either through the letterbox or at reception.

Test Results – **Please ring for test results after 2.30pm** as we do not receive test results back from the hospital until lunchtime.

For Urgent Calls when we are closed, please call 111

FOR YOUR DIARY ...

Ashford Service Rota

July

- 1st: 6th July 9.30am Ashford Morning Worship
- 2nd: 13th July 9.30am Ashford (with Longstone) Sung Eucharist
- 3rd: 20th July 9.30am Ashford Sung Eucharist
- 4th: 27th July 9.30am Sheldon (with Ashford) Eucharist

August

- 1st: 3rd Aug 9.30am Ashford Morning Worship
- 2nd: 10th Aug 10.30am Longstone (with Ashford) Parish Eucharist
- 3rd: 17th Aug 9.30am Ashford Sung Eucharist
- 4th: 24th Aug 9.30am Ashford (with Sheldon) Sung Eucharist
- 5th: 31st Aug 10.30am Ashford Benefice Eucharist

September

- 1st: 7th Sept 9.30am Ashford Morning Worship
- 2nd: 14th Sept 9.30am Ashford (with Longstone) Sung Eucharist
- 3rd: 21st Sept 9.30am Ashford Sung Eucharist
- 4th: 28th Sept 9.30am Sheldon (with Ashford) Patronal Eucharist

Quiz answers

1. The letter E
2. Cameo, area, simile
3. THEY SEE
4. Three consecutive letters in each word are in alphabetical order
5. Astronomers
6. Wolf in sheep's clothing
7. DULL - the others are made up solely of Roman numerals
8. Waste not, want not

The deadline for the July/August magazine is 23rd June 2025.

Please send any poems, photos, articles, recipes, puzzles, thoughts or reminiscences to stone.mary@sky.com. Thank you!

Many thanks to Richard Swift for photos of Rogation Sunday, and to Howard Stone for photos of the WM Institute.