

THE PARISH MAGAZINE
Ashford in the Water
and Sheldon
May 2025

ASHFORD SERVICES

4th May Easter 3: 9.45 am. Congregation led

11th May Easter 4: 9.45am. Sung Eucharist taken by Archdeacon Nicky

18th May Easter 5: 9.45am. Sung Eucharist

25th May Rogation: 9.45am. Service to be taken by Rev. Alan Griggs - Agricultural Chaplain

(Please note new Sunday service time from
June 1st: 9.30 am)

Funeral

16th April Jean Beard

SHELDON

4th May: 9.00am. Holy Communion with Canon
Tony



Psalm 100

Jubilate – A Song of Joy

**O be joyful in the Lord, all the earth; Serve the Lord with gladness
And come before his presence with a song.**

**Know that the Lord is God; It is he that has made us and we are his;
We are his people and the sheep of his pasture.**

**Enter his gates with thanksgiving and his courts with praise;
Give thanks to him and bless his name.**

**For the Lord is gracious; his steadfast love is everlasting,
And his faithfulness endures from generation to generation.**

Amen

ASHFORD-IN-THE-WATER

2025 Flower Festival and Well Dressing Details

Contact for more information:

Ian Pykett • 07985 042 392 • i.pykett@btinternet.com

Ashford-in-the-Water's **Well Dressings** and **Flower Festival** run concurrently from **Saturday June 14 - Sunday June 22 2025**.

- **Six** wells to be dressed.
- **Flower Festival** at Holy Trinity Church, Ashford-in-the-Water, DE45 1QG, 10.30 am - 7.00 pm daily. The theme is "Derbyshire Folk".
- **Puddling** of Clay into Well Dressing Boards: Sheepwash Bridge, Ashford-in-the-Water, DE45 1QF, Friday June 6, approx. 5.30 pm.
- **Petalling** of Well Dressing Boards at the War Memorial Institute, Ashford-in-the-Water, DE45 1QB, Saturday June 7, 2025 - Friday June 13. Visitors welcome!
- **Well Dressings in place for viewing around the village:** Saturday June 14 - Sunday June 22. **Runs concurrently with Flower Festival in Holy Trinity Church.**
- **Sheepwash Demonstration** at Sheepwash Bridge, Ashford-in-the-Water, DE45 1QF, Saturday June 14, approx. 3.00 pm.
- **Well Blessing Service and Sermon at the Old Preaching Cross** by Rt Revd Malcolm Macnaughton, Bishop of Repton: Holy Trinity Church, Ashford-in-the-Water, DE45 1QG, Sunday June 15, 3.00 pm
- **Village Parade and Blessing of the Wells** with Youlgreave Band. Starts at Holy Trinity Church, Ashford-in-the-Water, DE45 1QG, Sunday June 15, 3.30 pm.
- **Talk** by Ian Pykett: "Ashford's Notable People". Wednesday June 18, 7.00 pm. Holy Trinity Church, Ashford-in-the-Water, DE45 1QG.
- **Matlock Band** at the War Memorial Institute, Ashford-in-the-Water, DE45 1QB, Sunday June 22, 2.00 pm - 4.00 pm.
- **Closing Service of Thanksgiving** at Holy Trinity Church, Ashford-in-the-Water, DE45 1QG, Sunday June 22, 5.30 pm.

FLOWER FESTIVAL

PLEASE CAN YOU HELP?

14th – 22nd June

Open daily 10.30am – 7.00pm

This year's theme for the Flower Festival is: 'Derbyshire Folk' showcasing the many varied talents of people born or associated with Derbyshire.

As many of you will know, in the past we have had thousands of visitors coming to see the spectacular arrangements in the church and we have always had two stewards on duty throughout the day to welcome them, hand them a leaflet describing the arrangements and to look after the card stall and candles. The day is divided into 1½ hours slots starting at 10.30am and it is very satisfying to welcome people and hear the lovely comments that people make about the arrangements. **We would be most grateful if you could help us by covering one or maybe two slots during the week?** You don't need to be a member of the church to do this and I will be on hand to show you the ropes.

We are very grateful for the help received in the past years. Our visitors have appreciated your friendly welcome and you have certainly helped to make the Festival financially successful; we hope that you enjoyed the experience.

Please let me know if you can help by phoning me on 01298 871647, emailing: lindafoster07@btinternet.com or by adding your name to a slot on the rota which is on the table just inside the inner church doors.

Thank you! Linda



Dear Friends



We continue to share the joy of Eastertide and the hope that the Resurrection of Jesus offers to the world of peace, especially as we reflect on the turbulence we see and read about in the trading relationships of nations, and the horrifying attacks on civilian populations in Ukraine, Sudan and Gaza. Easter speaks of so much joy and transformation for those who witness the death and then the rising of Jesus, and for those who follow today.

We are all transitory in life, staying for a period of time and hoping to make meaningful contributions to the communities we live within and identify with, and the lives of those we are in a relationship with, as part of our family and through friendship. We all have hopes, aims and ambitions that we want to achieve, or help others to do so, through our encouragement, commitment, experience and skills. Sometimes, it might be putting ourselves forward in offering our time enthusiasm, and expertise, or needing a bit of encouragement and persuasion because somebody can see our potential.

Over the past 44 years of ministry within the Church of England as a deacon and priest I have seen, as indeed many of you will have, many changes to how things are seen, done and contemplated, as we respond to challenges and opportunities presented by God. Change and adaptation is true in nearly every aspect of life as we know it, and have known it- some good and some not so.

As a parish priest, it is trying to discern where God is present and active in guiding our thinking, planning and awareness of how values of kindness, generosity, justice, peace, integrity, faithfulness and compassion are lived out in the reality of our lives, that try to answer the Commission of Jesus to make disciples, and love our neighbour as we try to love ourselves.

The local Parish Church exists for those who have yet to become members of it, which is a challenge and an opportunity always to put at the heart of any agenda and discussion. There are no easy answers, nor quick fixes to growing church and community, but we begin to communicate with people who are not familiar with church practices, and probably don't want to be, by living an authentic life as a follower of Jesus through lives that mirror in every way God's abundant love, forgiveness, generosity, compassion, welcome and hospitality.

I know there is the temptation of the wider Church to measure how we do these things through measuring numbers attending Services, but there are many seeds to be sown by walking with people, accompanying them through the shadows of sadness and uncertainty, and having the confidence to let faith be shown.

It has been the greatest privilege and joy to have served as your Parish Priest and to work and minister with committed, faithful, loving, supportive and conscientious people, not just within the church community, but in schools, through community groups and activities, and giving of themselves

to improve people's lives and opportunities. Thank you for your love, support, encouragement, help, prayer and faithfulness.

The path of appointment for a new Vicar appears long, but I have confidence that God will send in time the right person to move forward, building on the best of the past, with the hopes and commitments that the churches in the benefice will be working on, with the Archdeacon, to help plan a future mission strategy that grows Church and grows Community.

For me, it is time to roll up the tent with Rachel and move on to a new part of our lives. It is never Good bye, but God be with you until we meet again. Pray for Rachel and myself, and as we pray for you, for the well-being of everybody and everything that makes us this wonderful part of God's Kingdom in the Peak District. God bless and keep you all in his love, peace and presence.

With love and prayers,

Tony

Ashford WI

Last month was a particularly busy one for the Ashford WI. At the end of March, we hosted an evening for the regional Lathkill WI Group; held in the Institute it was attended by over 50 people from the Chatsworth, Great Longstone, Bakewell, Monyash and Youlgreave WIs. Thanks to a herculean effort by several of our members, vast amounts of delicious vegetarian tagine and crumble

was cooked and served, all on a tiny budget, with the after-dinner interest provided by speaker Peter Corbett, a volunteer from the Derbyshire, Leicestershire and Rutland air ambulance who spoke about his experience of being rescued, and the important work of the service in general. The feedback from the other groups was great, everyone had a lovely time and Peter was particularly delighted. In addition to the group's £200 donation, he managed to collect a record £134 from the various collection tins. It's great to be able to contribute to such a key local service.

Then, on April 4, at the regular monthly meeting we listened to a fascinating talk from local medical herbalist, Frances Burton, who spoke about the centuries old tradition of using common-or-garden herbs and plants to ease a variety of ailments, before talking in more detail about the important properties of many. These included the dandelion, which can help with digestion; Nettles, whose anti-inflammatory properties can be used to treat osteoarthritis; Rosemary, which can help with concentration and even the effects of Alzheimer's, and Lemon Balm, to lift one's mood and reduce anxiety. And who knew the leaves from the Comfrey plant can be used topically as a poultice to alleviate the pain of sprains or even bursitis? For several members it brought back childhood memories of their parents or grandparents using such

home-made remedies and techniques to deal with various needs and illnesses.



As Easter was round the corner, last month's competition was for the best Easter bonnet. Congratulations go to the winner, Ruth, who saw off stiff competition from six other entries with a simple, yet striking hat decorated with tiny sheep! Congratulations also go to Judith who won the raffle.



Next month's meeting will be held on May 8th at 7.15pm, at which Tim Knebel will talk about The Peak District in the 1900s. The competition will be for the best local picture from the 1900s.

If you would like to join the Ashford in the Water WI, please email us on:

AshfordWI28@gmail.com New members are always very welcome.

BAKEWELL TAE KWON-DO

The Martial art for Youngsters and Adults,
Learning Self Defence, Getting Fit and
Having Fun.

We train every Monday evening at the
A.W.M.I, Ashford in the Water
Juniors 6.30pm to 7.30pm
Adults 7.30pm to 8.30pm

We are a member of the Tae kwon-do
Association of Gt Britain
(Supported by Sport UK)

Contact Mr Hilton (Instructor)
3rd Dan Black Belt
07808 130465
bakewelltkd@outlook.com
30 Years of Excellence
in the Bakewell area.

Ashford in the Water Parish Council

We're excited to announce that the Parish Council has a new website! It's designed to make communications easier, keep you updated with news, meeting minutes, events and important notices.

Please take a look: www.ashford-in-the-water-pc.gov.uk

Feel free to bookmark it and share any feedback!

PENROSE INTERIORS

DESIGN, STYLE AND QUALITY



Interior Design | Giftware & Accessories | Reupholstery | Headboards |
Curtains & Blinds | Wallpaper . Fabric . Paint | Poles & Tracks

A | Broomes Barns, Pilsley Lane, Chatsworth Estate, Nr Bakewell DE45 1PF
E | sales@penroseinteriors.co.uk W | penroseinteriors.co.uk
Opening Times | Monday - Saturday 10am - 5pm
Tel | 01246 583444

Mobile Gentlemen's & Boys' Barbers



Experienced & reliable.
At a time and place to suit
your busy life.

Teresa

TEL: 07974960209



The Joinery Workshop

(Derbyshire) Ltd.

- Quality, purpose made joinery
- Doors, windows, fitted furnishings
- Made to measure
- Traditional & contemporary
- Range of woods and finishes
- Estimate on request

01629 813633

07835238160

joineryworkshopltd@gmail.com

Or visit the workshop:
Hassop DE45 1NW

Brand New Class

The War Memorial Institute

Ashford in the Water

Solo
Ballroom
& Latin Class

Every Tuesday
1.15pm / 2.00pm

Sheer
DANCE

Jenny Sheeran 07734914327

Drew's Garage

SERVICING, REPAIRS
and TYRES



Please Contact Andrew For
All Of Your Motoring Needs

07538441006

drewsgarage205@gmail.com

SHELDON- DE45 1QS



Drewsgarage

Farming News

Busy, busy, busy is our life at the moment and my admin is mounting up on an unusually untidy desk. I have at least three or four neat piles of 'stuff and papers' which need attending to. I have an extremely high farm pile, a getting bigger holiday cottage pile with lots of jobs to do in each cottage and then a private pile with well-dressing notes to remind me each day what I should be doing! Unfortunately I resent sitting at the desk when the weather is so perfect so it will be another early morning or late night! Again! And then people still ask me how I fill my days since retiring from the shop!! Anyway the start of Spring, lighter evenings and unusually settled weather has offered us a period of light relief from the pressures of daily farming life. On the farm we have been able to turn out the cows and calves earlier than usual - although this has brought its problems. Too much Spring lush grass can cause a magnesium and calcium deficiency and last Saturday morning on our daily rounds of checking the cattle a cow was down and looking very unhappy. The quickest method for recovery is to inject calcium into a vein in the neck



but this takes a bit of skill, so we put it under the skin. After an hour she showed no sign of recovering so Will rang the vet and he of course put it into the vein. Unbelievably she was up and walking round within 5 minutes. A miracle! We then went and picked up some buckets of minerals with magnesium in – I think it's called shutting the stable door after the horse has bolted!

Great Longstone Flower Festival

St Giles' Church

10th – 17th May

10am-5pm


(Sunday 1pm-5pm)

Theme: Children's Hymns
Refreshments served in the
Village Hall



WYEGARTH ELECTRICAL SERVICES

For All Your Electrical Needs



Full Rewires
Extra Lights/ Sockets
Garden Lighting
Electrical Problems?

Call for your
FREE estimate
today

Serving the local community for over 30 years.
For a reliable, Friendly service

Office:01629814085

Mobile:07971786258

Email:wyegarthelectrical@gmail.com

Join us on Facebook



SHELDON JOTTINGS

The very mention of May conjures up pictures of blue skies, cumulus clouds and showers, swooping swallows, yes, they're here!, green fields full of lambs and calves and of days spent planting seeds, 'Always plant your runner bean seeds - 'Scarlet Emperor' of course - on the 11th my boy', my grandfather and father always told me! Putting out the bedding plants which had been nurtured during the previous month in the greenhouse or on the windowsill, and of looking in wonder at the beautiful mass of pink blossom of the cherry tree, the white of the damson and the sheer beauty of the apple blossom, a tree worth growing for that alone. But perhaps for us it is the joy of wandering by the hawthorn bushes dripping with dainty blossom and its unforgettable almond scent and then looking up and seeing the white covered bushes stretching away across the landscape



as we walk down Deep Dale amongst the cowslips and orchids, a sight not to be missed.

Also this is a month of change, we have a new Chair of the Parish Meeting, we trust, as Lindsey finally



lays down the mantle which she has worn so well. Thank you Lindsey for all the hard work you have done in the past few years and the meetings you have chaired, preceded by your wonderful home-made cakes! In your quiet and unflustered way you have guided the village forward in its decision making and kept us on the right path. For all this and so much more we thank you wholeheartedly.

Change is also due on the wider political front, please don't forget to vote in the local elections on May 1st - in the case of Sheldon, voting is in Ashford. Change too on the playing field - the old play equipment which has faced the weather for almost twenty five years has gone, and has been replaced with modern activity equipment which will be a delight to the younger members of the community and, as a nod to the past, a slide! Many, many thanks must go to Taz for arranging all this and to those helpers who maintain 'the playing field with a view'.

Canon Tony is also due to leave us and is finally taking retirement heading, we believe, to the beautiful Yorkshire Dales to be near his family - he will be sorely missed as he played such a large part in all our lives - for which we thank you Tony. Enjoy a well-deserved rest.

At the beginning of the month, on the 8th, we will be celebrating VE Day, the end of the Second World War, and remembering the sacrifices our parents and grandparents made during those dreadful years. A few of us will remember VE Day, the crowds and cheering, the delight tinged with sadness for those who didn't return, and for the lessons learnt about the futility of war.

At the moment of writing, the lawn around Hartington Hall is being cut for the first time this year as the first flowers of the cherry tree above blossom, and the blackbird is returning to its nest with a beak full of food. May is a wonderful month, a glorious time to be in Sheldon - we hope that you will enjoy its delights as much as we will.



May Quiz

1. Which tennis Open Championship normally begins in the last week of May?
2. May in the Northern Hemisphere is similar to which month in the Southern Hemisphere?
3. Which sweetly scented, highly poisonous woodland flowering plant is the birth flower of May?
4. Historically, what 2 sorts of dancing have been linked to May Day celebrations?
5. How long is the lifespan for the adult female Mayfly, *Dolania americana*: 5 minutes, 5 hours, or 5 days?
6. What is the more common name for the Mayflower shrub?
7. Victory in Europe Day, generally known as VE Day, was celebrated on which day in May, 1945?
8. According to a 1732 traditional saying, what should you never cast till May be out?
9. In the nursery rhyme 'Nuts in May', on what sort of morning are the nuts gathered?
10. The Mayflower left England for the Virginia Colony with which other ship on the 15 August, 1620?

Answers on last page.

Chatsworth Plumbing & Heating Ltd

- **BOILER INSTALLATIONS & GAS SERVICING**
- **LANDLORD CERTIFICATIONS**
- **INSTALLATION OF SOLID FUEL FIRED CENTRAL HEATING OR HOT WATER SYSTEMS**
- **INSTALLATION OF OPEN FIRES & SOLID FUEL FIRED APPLIANCES**
- **UNDERFLOOR HEATING**
- **SOLAR HOT WATER SYSTEMS**
- **BATHROOM INSTALLATIONS**

Friendly, local and prompt service by qualified personnel.
Customer satisfaction a priority.

For a free consultation or quotation please phone:

Tel: 01629 733 188

Mobile: 07739 797 644



An Introduction to your local milk delivery service Bakewell Dairy

We can deliver all your milk, eggs and cream requirements.

We deliver Monday / Wednesday / Friday

Pint Bottled Semi Skimmed Milk (Peak District Dairy) 60p

Eggs ½ Dozen free range eggs £1.10

Cream ½ pint Double Cream (Longley Farm) £1.20

Fruit Yoghurts (Longley Farm) 38p

1ltr Carton Orange Juice £1.10

Pint Bottled Whole Milk (Cox Brothers Great Longstone) 60p

Pint Bottled Skimmed Milk (Peak District Dairy) 60p

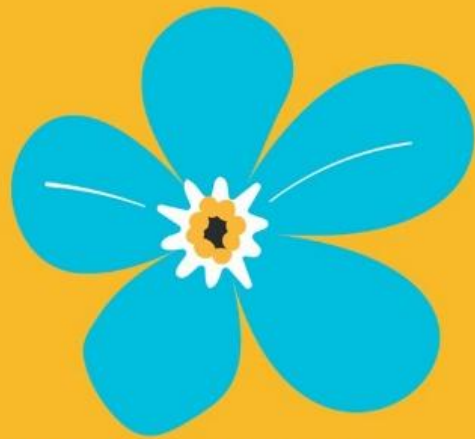
Cream ½ pint Single cream (Longley Farm) £1.10

Pint Fresh Orange Juice 75p

1ltr carton Cranberry £1.10

Please contact Colin on Phone / Text 07711 900030

Email csjcolin@btinternet.com



**MHA Communities
Derbyshire Peaks & Dales**

Forget me nots 

**£3 per
session**

Are you or someone you know living with dementia or memory loss?

2-4pm

Join us for friendship and support.

Group Walk Schedule:

28/05/2025: Hassop Station Café, DE45 1NW

25/06/2025: Castleton Visitor Centre, S33 8WN

30/07/2025: Longshaw Estate, S11 7TZ

27/08/2025: Millersdale Car Park, SK17 8SN

24/09/2025: Chatsworth Stick Yard (10am-1pm—
Bring a packed lunch)

For more info or to become a member please contact Derbyshire Peaks & Dales on 07934603926 or email: derbyshirepeaksanddales@mha.org.uk



EST. '23
PEAK DISTRICT
LAUNDRY



We are Based in Great Hucklow, Derbyshire.

We dry clean & launder a range of home furnishings & clothing, where possible we try to accommodate all requests.

Delivery available to your home or local drop off point.

*Eco-friendly products and packaging.
quality checking guaranteed on each and every wash!*



@peakdistrictlaundry



07931 493988



peakdistrictlinenandlaundry@gmail.com



Peak District Laundry



The Peak District National Park Authority is looking for two new Members

The UK's original National Park is looking to welcome two new Secretary of State-appointed Members to the National Park Authority and applications are now open.

The new Members will bring their knowledge, passion and experience to help shape the future of the National Park at perhaps one of the most challenging periods in its almost 75-year history.

The Peak District National Park Authority operates with 30 Members. Sixteen are appointed by county, district, city or borough councils and fourteen are appointed directly by the Secretary of State, of these 6 are parish councillors selected through a ballot of parish councils and parish meetings, and 8 are appointed because they are specialists in the issues that affect the National Park. The two Member vacancies are in this latter category.

Members have an important role in overseeing the management of the National Park. Their specialist knowledge and insight is invaluable in providing leadership and strategic expertise to ensure the Authority delivers for national and local communities.

Members come from a range of backgrounds and offer a wealth of knowledge and experience, but they all share a passion for the Peak District National Park. They devote between one and four days a month to Authority business, serving on committees or attending workshops or training. Members are not paid a salary for their work, but they do receive allowances.

To find out more or for any informal questions please contact Customer & Democratic Services, Peak District National Park Authority, on 01629 816200.

People are asked to apply online for the Peak District National Park Member vacancies through Defra (Department for Environment, Food and Rural Affairs).

Go to <https://apply-for-public-appointment.service.gov.uk/roles/8166>

The deadline for applications is 19 May. Appointments are for up to four years.



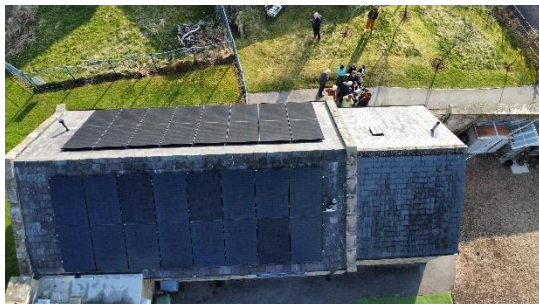
News of an environmental initiative in Hope Valley:

Sunny Solar Challenge @ Eyam CE Primary School



On Thursday 3rd April 2025 Eyam Church of England Primary School celebrated

the commissioning of their new solar panels. The event was attended by Ghazala Ahmad-Mear whose initial visit to talk about her trek to the South Pole started off the whole project. Also represented were Hope Valley Climate Action (HVCA) who helped support the project. Sadly, the installer, Tom Mastin of Smart Homes Electrical, could not be present as he was in London receiving an award from Octopus Energy.



The

children representing the school (head pupils, citizen lead, eco warriors) commended the school as a special place to learn and are proud that solar energy is now generating electricity for the school. They hope that their actions can set an example to others, showing that small schools can be an 'agent for change' for the climate and the sustainability of the planet. There is a sincere hope that it will be a trailblazer for other Hope Valley

schools. The Headteacher, Oona Gilbertson thanked the Governors, the parents-teachers association, Let's Go Zero, the Aviva Community Fund and the Garfield Weston Foundation for helping raise the necessary funds for the project.



A representative from Solar for Schools was also present to hand over the solar explorer's kit to Head teacher Mrs Gilbertson who has been the driver of this exciting sustainability project. The kit was purchased by HVCA for the Hope Valley schools to help children learn how solar energy can be used to

generate electricity. The kit is made in Germany by people with disabilities and comes with sets of teaching materials for all ages.



Future plans include working with other local schools to run a climate action event as part of the national expectation that schools are to work towards a net zero target: reducing direct and indirect emissions from education and care buildings, driving innovation and improving education. Also, as the school is soon to open a preschool it will be looking for ways to ensure any future projects include carbon cutting systems and can benefit from the in-house electricity supply.

**Join us for some gentle
seated exercise**

MHA Communities

Derbyshire Peaks & Dales



Love to Move

**Bakewell: Tuesdays, Bakewell Town
Hall, Council Chamber 10am - £5**

**Tideswell: Wednesdays, Fountain
Square Church, Tideswell, Back Hall 10.30-
12pm—£5**

**Hathersage: Thursdays, Hathersage
Memorial Hall, Stanage Room 11am - £5**

Come along and join our seated exercise sessions for anyone over 55 with a qualified instructor. A fun class for everyone and dementia friendly, plus tea and coffee.

For more information or to book

call 07934603926 or email derbyshirepeaksanddales@mha.org.uk



Methodist Homes (MHA) is a Registered Charity No.1083995; a Company limited by Guarantee No. 4043124.
Registered office: MHA, Epworth House, 3 Stuart Street, Derby, DE1 2EQ. Telephone 01332 296200. Website: <http://www.mha.org.uk>, Email: enquiries@mha.org.uk.

Baslow Health Centre – Church Lane, Baslow

www.baslowhealthcentre.co.uk

Appointment Times: Clinicians are still available for consultations and medical advice. Please contact the surgery and a GP or Nurse will call you back to discuss your concerns and if necessary arrange to see you in person. Many problems can be dealt with over the telephone.

Patient Online: Have you registered to use the online service? This allows you to book or cancel appointments online (during normal service) and order your repeat medications. You can also request access to your Summary Care Record, and Detailed Coded Data contained within your medical records. You can also look at your test results.

Telephone Numbers:

Reception: 01246 582216 District Nursing Team: 01332 564900

Health Visitor: 01246515100

Normal Surgery Opening Times Monday, Tuesday, Wednesday, Thursday & Friday 08:00am to 6.30pm, (Closed Bank Holidays) (*Phones 8.00am – 6.30pm Mon to Fri*)

Ordering Repeat Medication - You can order repeat medications in the following ways:

- In writing or with our on-line access service
- Return your repeat request form to surgery by Post

Please allow three working days before collection and collect between 8am and 5pm

Prescriptions can be collected from reception inside the surgery.

Samples – if you need to leave a sample with us, please ensure it is labelled with your name and date of birth and returned in a bag if provided either through the letterbox or at reception.

Test Results – **Please ring for test results after 2.30pm** as we do not receive test results back from the hospital until lunchtime.

For Urgent Calls when we are closed, please call 111

BAKEWELL MEDICAL CENTRE

www.bakewellmedicalcentre.co.uk 01629 816636

Normal Surgery Opening Times:

Monday to Friday 8am to 6.30pm (unless it's a bank holiday)

We do not close for lunch.

Closed

The surgery will be closed for training at 1.30pm on the 2nd Wednesday of each month.

Whitworth Urgent Treatment Centre at Whitworth Hospital is open from 8am to 8pm 7 days a week.

Please remember if you need to seek medical advice and the surgery is closed contact **111**.

Quiz Answers

1. The French Open
2. November
3. Lily of the Valley
4. Maypole dancing and Morris dancing
5. 5 minutes
6. Hawthorn
7. 8th May
8. A clout (an old word for a piece of clothing)
9. On a cold and frosty morning
10. The Speedwell

The deadline for the June magazine is 23rd May 2025.

Please send any poems, photos, articles, recipes, puzzles, thoughts or reminiscences to stone.mary@sky.com. Thank you!