

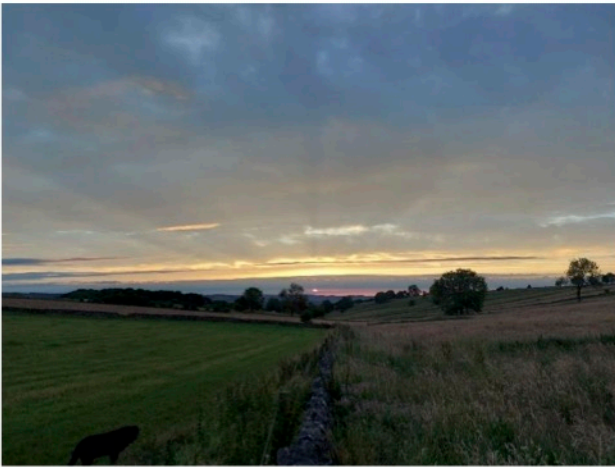
THE PARISH MAGAZINE
Ashford in the Water
and Sheldon
<https://ashfordparishchurch.com>
September 2024

ASHFORD

Sunday 1st: Trinity 14 Morning Worship 9.45am
Sunday 8th: Trinity 15 Sung Eucharist 9.45am
Sunday 15th: Trinity 16: Sung Eucharist 9.45am
Sunday 22nd: Trinity 17: Sung Eucharist 9.45am
Sunday 29th: St Michael and All Angels 10.00am Benefice Eucharist Sheldon

SHELDON

Sunday 22nd: Trinity 17: Holy Communion 9.00am
Sunday 29th: St Michael & All Angels: Benefice Eucharist 10.00am



Sunrise and sunset at Sheldon

A prayer of praise for creation

**O let the earth bless the Lord: bless the Lord you mountains and hills;
Bless the Lord all that grows in the ground: sing his praise and exalt him for ever.**

Amen

From the Benedicite



CELEBRATING CANON TONY

On Sunday 18th August, in anticipation of the retirement later this year of the Revd Canon Tony Kaunhoven, who has been our Vicar for 17 years, a Benefice service of Thanksgiving for the Sharing of Ministry Together was held in Ashford Church. The church was packed with parishioners from the Benefice, friends and family who gathered to give thanks for all that Tony has given to us during his ministry here. Beautiful music, chosen by Tony, was provided by organist Andrew Cummings and the combined choirs of Ashford and Bakewell, led by Director of Music Richard Swift.

Afterwards a buffet lunch in the Ashford War Memorial Institute was attended by over 100 people. Speeches were made by John Foster, Church Warden at Ashford, and Nigel Bartlett of Bakewell to thank Tony for his ministry, and Rachel



for her love and support. Gifts were presented to Tony from the congregation of Holy Trinity Church Ashford, including a beautiful Ashford Marble cross, and a bouquet was presented to Rachel. Hilary Bartlett of Bakewell had made a special retirement cake which Tony and Rachel cut together.



Thank you for everything Tony. We are glad we are not losing you just yet!



Dear Friends,

Up and down the country
young people are
preparing to begin



University and College Courses with many
of them leaving home and moving to begin
a new phase of their lives with a mixture
of excitement and natural apprehension. I
remember well the feeling in our house of
'empty nest syndrome' when our youngest
left and our emotion as we left him at his
new accommodation and realised that our
family life had changed.

Not everybody leaves home or goes on to
further education following their exam
results, but the starting of an
apprenticeship or entering the world of
paid work is equally an important moment
of transition and change where the
support and encouragement of loved ones
is part of the process of engaging with
change and opportunity.

During a conversation I heard recently on
the radio discussing the receiving of exam
results, somebody was saying how difficult
and challenging it is for young people to
be growing up in the world we inhabit
today compared to past generations.

There is certainly evidence to show that
young people are less happy and instances
of low self-esteem, mental health crisis,
and worries about the future are on the
rise. We associate young people with
optimism, compassion and a desire to see
justice prevail, but struggling with a post
Covid world, the uncertainties and
anxieties, as well as the pressures put on

young people to succeed, integrate, and
grapple with what type of world they will
inherit are all taking their toll.

Greater awareness of mental health,
respect and understanding towards young
people who are questioning their identity,
the call for social media reform, listening
and engaging with young people, are so
important. Offering hope that they can
and will have opportunity to flourish,
succeed and shape the future of our
planet as well as social and political
structures for the good of all, can help to
reverse the feeling that life is stacked
against them before they can properly
begin to engage in their own right.

Positive parenting, encouragement,
values, creating safe streets and
environments are all helpful. Tackling the
social divides that offer greater
opportunity for young people in certain
parts of our country to prosper, as
opposed to those who live in more
disadvantaged communities, is also an
important way of creating positive and
affirming opportunities for young people
to find happiness and fulfilment within
their lives.

We must do all that we can to reduce the
turbulence and uncertainty that cause
unhappiness, anxiety and division in order
to create a more positive and hopeful life
for all, especially amongst the younger
generation of our country.

Every Blessing

Canon Tony

Also from Canon Tony:

THANK YOU for the lovely Benefice gathering of Churches on Sunday 18th August and the lunch at Ashford Institute that followed and the opportunity to celebrate sharing life and ministry together with you all as part of the farewell of being your Vicar which culminates in my retirement at the end of the year. Rachel and I would like to thank the congregation and community of Holy Trinity Parish Church for their generous gifts and ongoing love for us.

There will be a United Benefice Service at Sheldon Parish Church on Sunday 29th September at 10 am celebrating Angels. All Welcome.

Ashford WI

It's been a very busy – and sociable – couple of months for the Ashford WI ladies.



In early July the group enjoyed a lovely summer lunch at Piedaniels in Bakewell, which once again did not disappoint; even the sun made an appearance. Sadly the weather wasn't quite so kind for our visit to Baslow Bowls Club the following week, but despite the light but persistent drizzle

we had a great afternoon learning how to play crown green bowls courtesy of lead coach Graham, who was very patient. Thanks very much to Anne for organising!



Our August meeting was even more social with friends and family joining us for an evening of dance. Guided by our excellent professional dancer Jose and his partner, we learned some simple, energetic steps for Salsa and Merengue, including turns, spins and some rather twisty adventurous arm movements. It's not as easy as they make it look in Strictly! But it was great fun.

Next month's meeting is on September 5th at 7.15pm, when, following his very enjoyable talk last year, former forensic scientist Paul Newsham will be paying us another visit to tell us more about Biometrics and Forensics. Then, on September 28th, in conjunction with Derbyshire Carers we are hosting a Cuppa & Cake day in the Institute, with proceeds going to help local families in need at Christmas.

If you would like to join the Ashford in the Water WI, please email us on:

AshfordWI28@gmail.com

New members are always very welcome!

PENROSE INTERIORS

DESIGN, STYLE AND QUALITY



Interior Design - Reupholstery - Headboards - Curtains & Blinds
Poles & Tracks - Wallpaper - Fabric - Paint - Giftware & Accessories

A | Broome's Barns, Pilsley, Nr Bakewell, Derbyshire, DE45 1PF T | 01246 583444

E | sales@penroseinteriors.co.uk W | www.penroseinteriors.co.uk

Opening Times | Monday – Saturday 10am – 5pm

Chatsworth Plumbing & Heating Ltd

- **BOILER INSTALLATIONS & GAS SERVICING**
- **LANDLORD CERTIFICATIONS**
- **INSTALLATION OF SOLID FUEL FIRED CENTRAL HEATING OR HOT WATER SYSTEMS**
- **INSTALLATION OF OPEN FIRES & SOLID FUEL FIRED APPLIANCES**
- **UNDERFLOOR HEATING**
- **SOLAR HOT WATER SYSTEMS**
- **BATHROOM INSTALLATIONS**

Friendly, local and prompt service by qualified personnel.
Customer satisfaction a priority.

For a free consultation or quotation please phone:

Tel: 01629 733 188
Mobile: 07739 797 644



An Introduction to your local milk delivery service

Bakewell Dairy

We can deliver all your milk, eggs and cream requirements.

We deliver Monday / Wednesday / Friday

Pint Bottled Semi Skimmed Milk (Peak District Dairy) 60p	Pint Bottled Whole Milk (Cox Brothers Great Longstone) 60p
Eggs ½ Dozen free range eggs £1.10	Pint Bottled Skimmed Milk (Peak District Dairy) 60p
Cream ½ pint Double Cream (Longley Farm) £1.20	Cream ½ pint Single cream (Longley Farm) £1.10
Fruit Yoghurts (Longley Farm) 38p	Pint Fresh Orange Juice 75p
1ltr Carton Orange Juice £1.10	1ltr carton Cranberry £1.10

Please contact Colin on Phone / Text 07711 900030

Email csjcolin@btinternet.com

Farming News



The farm yard is looking unusual at the moment. It's very very tidy! In the last month we have had important visits from three different companies. The first was the annual red tractor visit so we can be registered as Farm Assured. In return we get a premium price for any cattle sold in markets and of course where all our fat cattle go - to Waitrose. In theory we are visited once a year to check all our book-keeping is up to date and then to look at the cattle, where they are kept, the food they eat and almost everything else involved in our farming life. As with all these things the girl spent 15 minutes at the farm and three hours in the office. I have four big lever arch files full of medicine records, spraying records, fertiliser records, ploughing and cultivating records. The list is endless and almost all, I think, totally unnecessary. We even have to keep records of when the dogs and cats are wormed! Also maps of the farm and buildings of where and when I put down rat poison. It does rather aggravate me as surely they ought to be looking at the cattle, looking for lame or poorly cows (not that

they will find any here!!). Seemingly good husbandry, which is our priority, doesn't come into it. The next visit was from the Waitrose bigwigs. Not a piece of baler twine or manure to be seen anywhere! They wanted to see a typical family beef farm in the North so after being treated to a nice lunch at the Ashford Arms, we toured the farm. Fortunately it was a lovely sunny day and they all enjoyed seeing an upland farm in our beautiful part of the country. The final visit and the one which was the most worrying was the Environment Agency visit. The chap who we were due to have is notorious for being very keen and strict on all the rules regarding slurry disposal. Fortunately all our sheds are bedded with straw so the cattle lie on dry beds so we don't have wet manure which is called slurry and can run off into the water systems. Anyway after ten minutes we had engaged with him after talking rugby with William! A good start. He was happy with everything apart from the manure which is pushed out into the yards every day to the outside yards. These heaps in winter when rained on will become slurry and therefore dirty water will run off into the water course not the drains. So the result is we will have to cover with a roof all the outside

yards where the muck heaps are stored. Total cost probably £100,000 plus!!

I have a bee in my bonnet about ragwort at the moment. This year the fields are covered with the big yellow flower. The weed poses a serious risk to animal health and can be fatal if eaten in either its green or dried state. Ragwort is covered by the Weeds Act 1959 and Ragwort Control Act of 2003. Sheep will eat it when it's young and it has no effect on them at that stage.

However if left it will soon take over, as seen in some roadside fields up Scatter. In the old days farmers pulled it up by hand and it was always seen as a sign of a bad farmer if it appeared in your fields. One plant can produce 150,000 seeds and has a germination rate of 70%, so one or two plants will soon multiply into a field of yellow.

Ashford in the Water Parish Council

For information about the village and surrounding area, and the activities of the Parish Council, please visit <http://www.ashford-in-the-water-pc.gov.uk>

Mobile Gentlemen's & Boys' Barbers



Experienced & reliable.
At a time and place to suit
your busy life.

Teresa

TEL: 07974960209

Drew's Garage

**SERVICING, REPAIRS
and TYRES**



**Please Contact Andrew For
All Of Your Motoring Needs**

07538441006
drewsgarage205@gmail.com

SHELDON- DE45 1QS



SHELDON JOTTINGS

On a beautifully balmy Thursday evening in mid-July around one hundred and thirty runners, male and female of all ages, left the start line outside the 'Cock and Pullet to tackle the gruelling four mile Sheldon Fell Race. Cameras clicked as they were cheered on their way up to Bakewell Gate then down to the river Wye, along the footpath by the river before climbing the 200 metres (600 Feet) back to the top of the village before the last 'sprint' down through the village to the finish line. Surprisingly the winner Harry Holmes of Matlock completed the course in a little over twenty minutes. The first lady home was Sara Willhoit who also received the prize as first local lady home. Congratulations to them and to all who braved the course. It was good to see so many runners taking part and so many spectators from the village giving them encouragement, testimony to the excellent organisation for which we must thank Philip and Jo and all their helpers for all their hard work.

All that week we had been promised that it would rain on the following Saturday, which was of course Sheldon Day, (the day of the village Fête) but the powers that be relented and the anxiously followed



Apps and forecasts reported that rain would not arrive until evening. What a delightful picture the village made with stalls and activities spread from top to bottom of the street ranging from Cream Teas in the Village Hall, sales of cakes, books, plants, bric-a-brac, and pork baps. chocolate tombola, and a bottle stall to name but a few. A short stroll to the Church was repaid with the most wonderful flower display.

Next door to the Church is the playing field. Here was entertainment a-plenty with the ever-popular 'welly wanging', a coconut shy, a competition tent with terrific cakes, chutney, jams, vegetable animals, and marmalade, an adjacent tent housed an entertainer to amuse the children and ranged round the field were beautiful vintage cars and engines. Taking centre stage was the annual fun dog show which is always a most popular event. Competition was fierce for classes such as the dog with the waggiest tail and best dog - the Champion was Louis whose owner was Marion Smith from Ashford. Thank you to all those who took part and a special thank you to Angie and Andy for organising such a successful event.

The Show concluded with the race of balls down the village street ably helped on by the youngsters with

shouts of delight. As the crowds wended their way home up the village many stopped to have a go at 'Splat the Rat.' Run by Tony this surely was one of the more successful events with over 200 people attempting the near impossible! This is one of the original games, with the same equipment, which also proved a hit in the first Sheldon Day over 40 years ago. THE RAIN CAME AT FIVE O'CLOCK!!

Finally we must congratulate Andrew and his many helpers and those who run stalls on a great show. They spend countless hours (many it must be said meeting in the Pub!) organising the event, putting up bunting, tents and stalls and taking them down! Thank you all for the time and effort you give to help raise much needed funds for the village.

At the same time at Nottingham Theatre Royal the English youth Ballet was giving a performance of 'Giselle'. With professional dancers from International Ballet Companies taking the leading roles, the company gives young dancers a wonderful performance opportunity to dance alongside the principals in solo and corps de ballet roles. One of those taking part was Alice F who is 8 years old. A great achievement for one so young; congratulations and well done Alice.

Sheldon Tractor run will take place on the 1st September starting from outside the 'Cock and Pullet at 9:30am for a 10:00am start when the participants return after a run and no doubt a stop or two. There will be refreshments and a raffle at the C and P. The run this year will be in memory of Mick Lester who we so tragically lost earlier this year.

On Saturday 10th August George and Izzy were married in Sheldon Church in one of Canon Tony's last services before he retires to Ripon. The reception and evening party took place at Lower Farm and the couple will live in a little cottage in Bradwell. We wish them every happiness in their married life.

After such a busy summer we shall of course be saying goodbye in September to our swallows and house martins which have given us such great joy during the past five months or so. They give us one last spectacle when they collect on the wires at Top Farm before leaving on their remarkable journey. We wish them God speed and look forward to their return in April 2025.

Diary Date

Sunday September 1st – Sheldon Tractor Run in Memory of Mick Lester.

Meet 9:30 for 10:00am outside the Cock and Pullet.



PEAK DISTRICT LAUNDRY



We are Based in Great Hucklow, Derbyshire.

We dry clean & launder a range of home furnishings & clothing, where possible we try to accommodate all requests.

Delivery available to your home or local drop off point.

*Eco-friendly products and packaging.
quality checking guaranteed on each and every wash!*

 @peakdistrictlaundry

 07931 493988

 peakdistrictlinenandlaundry@gmail.com

 Peak District Laundry



PUZZLE CORNER



September Quiz

1. The name September comes from the Latin word 'septem', which means what?
2. The Anglo-Saxons called the month *Gerstmonath*, after which crop usually harvested in September which they used to brew beer?
3. September's birthstone is which precious gemstone, a variety of the mineral corundum?
4. Queen Elizabeth 1st was born on 17th September 1533. Can you name her mother?
5. Which British Prime Minister exclaimed on 30th September 1938, "I believe it is peace for our time."?
6. What name is given to the feast of St Michael the Archangel, celebrated on 29th September?
7. On 7th September 1838 which daughter of the keeper of Longstone lighthouse, risked her life in a small rowing boat to save nine shipwrecked people?
8. On 13th September 1902 Harry Jackson became the first person

in the UK convicted on what sort of evidence?

Answers on last page.



The Joinery Workshop
(Derbyshire) Ltd.

- Quality, purpose made joinery
- Doors, windows, fitted furnishings
- Made to measure
- Traditional & contemporary
- Range of woods and finishes
- Estimate on request

01629 813633
07835238160
joineryworkshopltd@gmail.com
Or visit the workshop:
Hassop DE45 1NW

Brand New Class
The War Memorial Institute
Ashford in the Water

Solo Ballroom & Latin Class
Every Tuesday
1.15pm / 2.00pm

Sheer DANCE

Jenny Sheeran 07734914327

Blythe House Hospice launches a new name and look to increase awareness of their care and support across North Derbyshire.

Blythe House Hospice provides free care and support to people across the High Peak, Hope Valley, Derbyshire Dales, Chesterfield and North East Derbyshire, who are affected by cancer and other life-limiting illnesses. The hospice also supports those who are bereaved.

Geographical challenges mean that patients in the local community must travel some distance for care and support. The charity works to ensure that care and support can be accessed close to home.

Blythe House Hospice offers advice and support, from diagnosis through to bereavement, services include complementary and physical therapies; support groups; nursing services; out-patient clinics; counselling and bereavement support for adults and children.

The Hospice at Home service provides end-of-life care in the comfort of patients' homes. The Roaming Car service provides responsive care to help patients when they have an urgent-need overnight, this helps to avoid the need for ambulance call outs, A&E

department input, or hospital admission.



Previously known as Blythe House Hospicecare and Helen's Trust, the North Derbyshire hospice charity launched their new brand at their prestigious 35th anniversary Gala Ball on Friday 28th June at The Octagon, Buxton. The charity is pleased to reveal a new, clear logo and updated name to **Blythe House Hospice**.

Message from the CEO of Blythe House Hospice:

Shane O'Reilly, hospice CEO said: *'Blythe House Hospice strives to provide as much care and support to as many people who need us across North Derbyshire. To enable us to do this we needed to develop a strong identity, one that is recognisable across the whole of North Derbyshire, so people are aware we are there for them if they need us.*

Since the charities merged back in 2020, we found that some parts of

North Derbyshire weren't engaging with our clinical teams as much as we would like and we know there are many more people in our communities that our services can support. We're conscious that North Derbyshire is such a large area that we need to have a strong identity and message to make sure people know how to access care if and when they need it.

The clear new look and identity of Blythe House Hospice enables us to promote ourselves and the incredible work we do across North Derbyshire, therefore allowing us to care for, and support more patients and families than ever before.

On behalf of everyone at Blythe House Hospice and myself a huge thank you to our community, we look forward to what the future has to hold for Blythe House Hospice.

We may look different, but our purpose is the same.'

It now costs over £2 million every year to keep services at Blythe House Hospice running. We receive less than 20% of the income needed to operate from the NHS, meaning we must raise the vast majority through our retail and fundraising activities.

To help us care for as many people as possible across North Derbyshire affected by life-limiting illnesses,

there are many ways you can support us.

Thanks to the remarkable generosity of the local community the care and support provided is completely free of charge. To find out more, please telephone: 01298 815388, or visit: www.blythehousehospice.org.uk



Brand New Co-Working Space Opens in Bakewell, Peak District National Park

The Peak District National Park Authority is excited to announce the grand opening of a new co-working space, in the heart of Bakewell, offering a vibrant and collaborative community-driven environment for local small businesses or any professionals. Situated in the picturesque National Park, the Peak District Business Hub combines modern amenities with the serene beauty of the countryside, providing a unique working experience. The new facility has been created to serve the local business community and is the first and only place of its kind located within the Peak District National Park. It features high-speed internet, dedicated desks,

and communal breakout areas. Additionally, the workspace offers a bookable well equipped meeting room, modern and comfortable furniture, plus unlimited free tea and coffee. “We are thrilled to be bringing the Peak District Business Hub to the people of Bakewell and surrounding areas,” said Phil Mulligan CEO of the Peak District National Park Authority. “Our goal is to create a dynamic and supportive community where local professionals can thrive. The Peak District’s natural beauty and our excellent facilities make the Peak District Business Hub an ideal place for creativity and productivity.”

The Peak District Business Hub is committed to fostering a collaborative and innovative local community. Members will have access to a range of networking events, workshops, and social gatherings, promoting professional growth and connection.

Key features of the Peak District Business include:

- **Flexible Membership Plans:** The co-working space works on a Pay-As-You-Go plan – meaning that you don’t have to commit to a minimum monthly amount.
- **State-of-the-Art Facilities:** High-speed

internet within a stunning open-plan high ceilinged room plus ergonomic furniture ensure a productive work environment.

- **Community Events:** Regular events such as networking mixers, professional workshops.

For more information about the Peak District Business Hub and to schedule a tour, please visit

www.peakdistrictbusinesshub.co.uk
or contact the team
at info@peakdistrictbusinesshub.co.uk.

VILLAGE ALBUM



Duck’s eye view on Fennel Street

Baslow Health Centre – Church Lane, Baslow

www.baslowhealthcentre.co.uk

Appointment Times: Clinicians are still available for consultations and medical advice. Please contact the surgery and a GP or Nurse will call you back to discuss your concerns and if necessary arrange to see you in person. Many problems can be dealt with over the telephone.

Patient Online: Have you registered to use the online service? This allows you to book or cancel appointments online (during normal service) and order your repeat medications. You can also request access to your Summary Care Record, and Detailed Coded Data contained within your medical records. You can also look at your test results.

Telephone Numbers:

Reception: 01246 582216 District Nursing Team: 01332 564900

Health Visitor: 01246515100

Normal Surgery Opening Times Monday, Tuesday, Wednesday, Thursday & Friday 08:00am to 6.30pm, (Closed Bank Holidays) (*Phones 8.00am – 6.30pm Mon to Fri*)

Ordering Repeat Medication - You can order repeat medications in the following ways:

- In writing or with our on-line access service
- Return your repeat request form to surgery by Post

Please allow three working days before collection and collect between 8am and 5pm

Prescriptions can be collected from reception inside the surgery.

Samples – if you need to leave a sample with us please ensure it is labelled with your name and date of birth and returned in a bag if provided either through the letterbox or at reception.

Test Results – **Please ring for test results after 2.30pm** as we do not receive test results back from the hospital until lunchtime.

For Urgent Calls when we are closed, please call 111

BAKEWELL MEDICAL CENTRE

www.bakewellmedicalcentre.co.uk 01629 816636

Normal Surgery Opening Times:

Monday to Friday 8am to 6.30pm (unless it's a bank holiday)

We do not close for lunch.

Closed

The surgery will be closed for training at 1.30pm on the 2nd Wednesday of each month.

Whitworth Urgent Treatment Centre at Whitworth Hospital is open from 8am to 8pm 7 days a week.

Please remember if you need to seek medical advice and the surgery is closed contact **111**.

PUZZLE CORNER

September Quiz answers

1. Seven (It was the 7th month in the old Roman calendar.)

2. Barley

3. Sapphire

4. Anne Boleyn

5. Neville Chamberlain

6. Michaelmas

7. Grace Darling

8. Fingerprint evidence

The deadline for the October magazine is 24th September 2024.

Please send any poems, photos, articles, recipes, puzzles, thoughts or reminiscences to stone.mary@sky.com. Thank you!

Many thanks to Charlotte Swift for the photos of Sheldon on the front page.