

THE PARISH MAGAZINE
Ashford in the Water
and Sheldon

<https://ashfordparishchurch.com>

December 2023

Ashford Services

Sunday 3rd Advent Sunday: 9.45am Morning Worship

Sunday 10th Advent 2: 9.45am Sung Eucharist

Saturday 16th : 5pm Festival of Nine Lessons and Carols, followed by mulled wine and mince pies.

Sunday 17th Advent 3: 9.45am Sung Eucharist

Sunday 24th Advent 4: 9.45am Morning Worship with Advent Carols
4.00pm Crib Service

Monday 25th Christmas Day 10.00am Christmas Eucharist with Carols

Sunday 31st Christmas 1 10.00am Benefice Eucharist at Rowsley – no Service in Ashford.

Sheldon

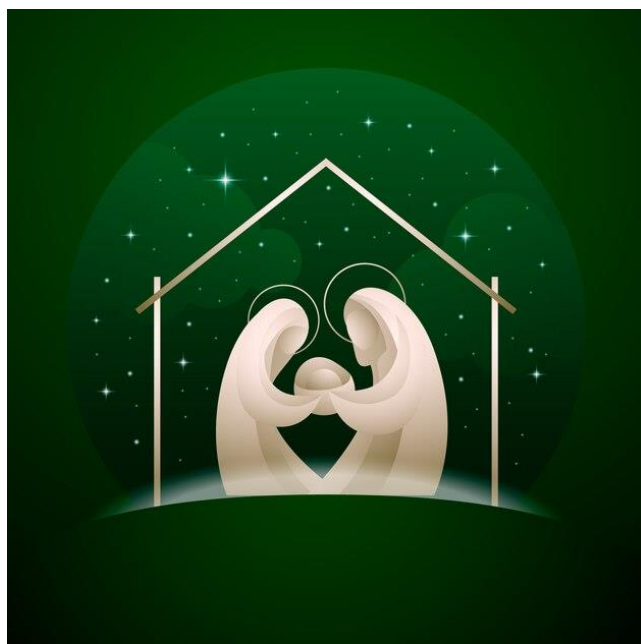
Sunday 17th Dec. 4.00pm Village Nativity

A hymn of Christmas

Hark! The herald-angels sing
Glory to the new-born King,
Peace on earth and mercy mild,
God and sinners reconciled.
Joyful, all ye nations rise,
Join the triumph of the skies;
With the angelic host proclaim,
‘Christ is born in Bethlehem.’

Hark! The herald-angels sing

Glory to the new-born King.



ASHFORD CHRISTMAS SERVICES

Saturday 16th December at 5pm

Festival of Nine Lessons and Carols

Followed by mulled wine and mince pies.

Christmas Eve

9.45am Morning Service with Advent carols

4.00pm Crib Service by candle light

Christmas Day

10.00am Christmas Sung Eucharist with Carols

ALL WELCOME! PLEASE JOIN US!



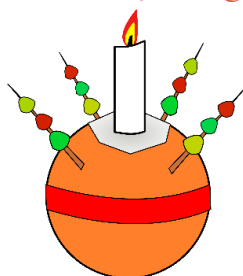
Christingle Service

Sunday 7th January 2024 9.45am at Holy Trinity, Ashford

Christingle is a joyful celebration that brings families and communities together to share the light of Jesus and spread a message of hope.

Do come and join us and make your own Christingle – everything will be supplied.

All donations will be sent to the Children's Society to help further their amazing work with vulnerable young people.



Dear Friends

We celebrate the Incarnation (Jesus taking our human flesh) this year against the backdrop of suffering and trauma for the people of Gaza, Israel, Ukraine, Sudan, Yemen and Syria as a result of war and conflict, with the consequences for the lives of individuals, families and communities. Once again we will sing about the Prince of Peace entering our world to bring healing, reconciliation and peace in our Carols and once again we will listen to the Christmas readings that look forward to a world freed from oppression, tyranny, violence and division. But as we listen and sing, we might feel that the joy, hope, promise and certainty of Christmas has been lost on those who wage war and do not appear to care about the numbers of people killed, wounded, maimed and traumatised.

However difficult it is to imagine how, when and where wars will cease and the Prince of Peace will bring in God's Kingdom of justice and peace, this is our hope and something that we are all called to work for. At the heart of Christmas is the demonstration of God's love for the world by entering it in human flesh, identifying with humanity and placing himself in the centre of poverty, suffering,



brokenness and need in order to open the door to transformation, healing and hope. Christmas is an invitation to respond to God entering the world in human form, by agreeing to work in collaboration with God to end wars and reconcile differences, and by being determined to close the gaps that divide people.

Embracing and receiving Emmanuel, God with us, takes us beyond the twelve days of Christmas into the New Year and beyond. Through courage, compassion, generosity, sacrifice and the desire to take light into the darkness of war and suffering, may we reach out to the victims of conflict and poverty. May these things also give us hope and inspiration to embrace and live out through our lives and witness, the true message and hope of Christmas in every way, context and relationship. God needs us all to be peacemakers and agents of hope and love, wherever we are, and through opportunities to serve our neighbour.

Every blessing for Christmas.

Canon Tony





Ashford Village Christmas Carol Singing

will take place on Wednesday 20th December starting at 6pm. It will be in the usual place near to the Christmas tree and the bridge but if the weather is unkind, it will be at the War Memorial Institute. Mulled wine and mince pies will be available and any profit will be split between the Institute and the church.



CHRISTMAS CRAFT FAIR SUNDAY 3rd DECEMBER

10am to 4pm

in aid of

ASHFORD WAR MEMORIAL INSTITUTE

**APPROXIMATELY 16 STALLS WITH HANDMADE
CRAFTS AND FOOD**

SHOP LOCALLY FOR ALL YOUR CHRISTMAS GIFTS!

DELICIOUS REFRESHMENTS AND MULLED WINE!

Stall enquiries please phone Pat on 01629 812521



Many thanks to Richard Mayson
for this new magazine feature:

Wine of the Month

Ferreira, Dona Antónia

10 Year Old Tawny Port

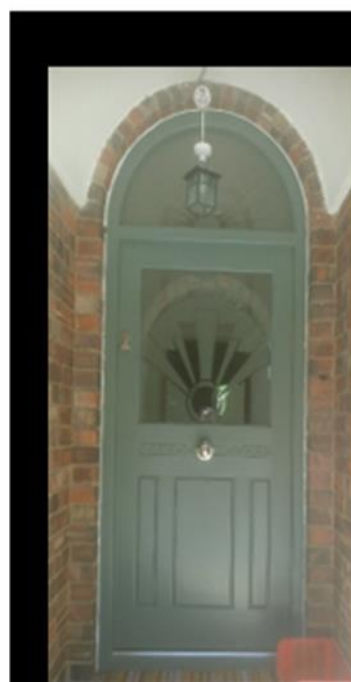


Following our successful wine tasting at Holy Trinity in November, this is the first in a series of short articles recommending wines from local stockists. For December I am suggesting a Port that is perfect to drink over Christmas and beyond. Ferreira is not one of the best-known names in the UK but it is a best-selling brand in Portugal where they are known for producing tremendous tawny Ports. Aged for between 8 to 15 years of age in smallish barrels (so called 'lodge pipes'), the wine takes on a smooth, suave silky texture as the tannins soften and the colour turns 'tawny'. The flavours are rich but mellow with a dried fruit and toasted almond character that makes it akin to liquid Christmas cake. At £24.99 this is not one of the cheaper Ports on the market but the ageing process that it has undergone means that you can serve it, a glass at a time, over a

period of weeks without the wine deteriorating. Served cool from the fridge, it will taste positively refreshing at the end of a meal. Enjoy this with almonds, Brazil nuts, walnuts, milk chocolate or soft, creamy cheese. It would be perfect with a *pastel de nata* (the Portuguese custard tarts) that are now easy to find in Bakewell or for authenticity try them freshly baked from the Lisboa Pastelaria in Crookes if you are venturing into Sheffield.



£24.99 John Hattersely
Wines, Bakewell



The Joinery Workshop

(Derbyshire) Ltd.

- Quality, purpose made joinery
- Doors, windows, fitted furnishings
- Made to measure
- Traditional & contemporary
- Range of woods and finishes
- Estimate on request

01629 813633

07835238160

joineryworkshopltd@gmail.com

Or visit the workshop:
Hassop DE45 1NW

An Introduction to your local milk delivery service

Bakewell Dairy

We can deliver all your milk, eggs and cream requirements.

We deliver Monday / Wednesday / Friday

Pint Bottled Semi Skimmed Milk (Peak District Dairy) 60p	Pint Bottled Whole Milk (Cox Brothers Great Longstone) 60p
Eggs ½ Dozen free range eggs £1.10	Pint Bottled Skimmed Milk (Peak District Dairy) 60p
Cream ½ pint Double Cream (Longley Farm) £1.20	Cream ½ pint Single cream (Longley Farm) £1.10
Fruit Yoghurts (Longley Farm) 38p	Pint Fresh Orange Juice 75p
1ltr Carton Orange Juice £1.10	1ltr carton Cranberry £1.10

Please contact Colin on Phone / Text 07711 900030

Email csjcolin@btinternet.com

Chatsworth Plumbing & Heating Ltd

- **BOILER INSTALLATIONS & GAS SERVICING**
- **LANDLORD CERTIFICATIONS**
- **INSTALLATION OF SOLID FUEL FIRED CENTRAL HEATING OR HOT WATER SYSTEMS**
- **INSTALLATION OF OPEN FIRES & SOLID FUEL FIRED APPLIANCES**
- **UNDERFLOOR HEATING**
- **SOLAR HOT WATER SYSTEMS**
- **BATHROOM INSTALLATIONS**

Friendly, local and prompt service by qualified personnel.
Customer satisfaction a priority.

For a free consultation or quotation please phone:

Tel: 01629 733 188

Mobile: 07739 797 644



PENROSE INTERIORS



Interior Design | Soft Furnishings | Re-upholstery | Curtains & Blinds |
Poles & Tracks | Wallpaper | Fabric | Paint | Giftware | Home Accessories

  FIND US ON FACEBOOK & INSTAGRAM

A: Broome's Barns, Pilsley, Nr Bakewell, Derbyshire, DE45 1PF T: 01246 583444
E: sales@penroseinteriors.co.uk W: www.penroseinteriors.co.uk

Opening Times: Monday – Saturday 10am – 5pm

Located in Pilsley village, near the Chatsworth Farm Shop and next to the Devonshire Arms pub.

Farming News



Further to my rant last month about losing good land for tree planting, this letter was in the Farmers' Weekly last week and I thought it was worthy of putting in this month's Farming News:

'Reading the article about Cheshire West and Chester Council selling a tenanted farm for tree planting, I wonder if the esteemed Council leader Louise Gittens could perhaps publish a recipe on how to cook a tree, as if this nonsense continues there will be not much else left for an ever-growing nation to eat. There are two negatives to this: firstly council farms are generally fairly small and are a perfect start for youngsters trying to get on the farming ladder, and secondly what absolute nonsense to put over a productive, good Cheshire farm over to woodland. Honestly I absolutely despair as to the greed of landowners and particularly councils as this is surely all down to money.'

Looking forward (!) to a visit this week from the Health and Safety. Farms are notoriously dangerous

but I'm sure the young girl who is paying us a visit will have no conception it is a working farm and we have to use machinery, ladders, and all the other pieces of large machinery. No doubt we will have to produce a folder of risk assessments which will sit in the office and never be looked at again'

ASHFORD W.I.



On Thursday
2nd November Barbara Hitchins, who is an Ashford WI member, gave a talk about hearing loss and lip reading. She comes from a family with hearing problems and she now runs lip reading classes. She has had a cochlear implant and this enables her to hear much better.

After a short talk about coping with deafness, she involved the audience by reading without vocalising. We then tried to understand what she had mouthed with various results! Numbers and dates and the letters "p" and "b" were particularly hard to distinguish. It was a very informative and interesting afternoon.

In December our Christmas Party meeting is on December 7th at 7:15 pm (please note this is a week later than the date advertised in the WI dates booklet). On December 8th the WI Carol Service is in the

Church. Please arrive at 7:00 pm for 7:30 start. Finally on Thursday 14th is the WI Christmas Meal at The Merchant's Yard, Tideswell.



NEW YEAR QUIZ NIGHT

**ASHFORD WAR
MEMORIAL INSTITUTE**

**SATURDAY 6TH
JANUARY - 7PM FOR
7.30PM
TEAMS OF 4 PEOPLE**

**REFRESHMENTS OF
SOUP, BREAD AND
CHEESE**

**ADMISSION £5
ENQUIRIES PAT 01629
812521**

SHELDON JOTTINGS



This Autumn has been cloudy, wet and cheerless with only a very few clear days and even fewer sunny days to make us feel more alive and hopeful.

Back again is the huge flock of starlings which flies over the village each morning just as it is getting light. They are going to forage in the fields beyond. This will be just one flock and they meet again at dusk to fly back to meet other flocks at their roost on Middleton Moor. Here they meet in the vegetation at the side of the waters where they can feel safe. The sheer numbers of them are quite spectacular – all this is called a murmuration of starlings and is well worth making a visit to see.

We were cheered at Halloween by a visitation of scary faces, witches and ghosts. Each had a small bucket, the youngest and smallest in front with a shy grin, thrusting his bucket forward with a chorus of 'trick or treat'. How can one resist? Sweets and chocolates were handed over to smiling faces. Thank you for coming.

Remembrance Day, as ever, proved a most moving experience. Anyone who has stood before a memorial with those lists of names, or indeed seen the vast lines of graves in Northern France and Belgium,

cannot help but wonder at the sacrifice of so many and the futility of war. The five young men, John Brocklehurst, Thomas A. Brocklehurst, Anthony Gyte, Alfred Wildgoose and John Sherwin, all from Sheldon, who left this small village, no doubt unaware of what awaited them, yet full of hope to do their duty for 'King and Country', and who gave their lives in the First World War. They deserve to be honoured and remembered.

The restoration of the Sheldon village water tank at the top of the



village street is now complete. The tank is obviously of great importance for our village history and was built to contain water which was pumped up from the river Wye many feet below Sheldon and quite some distance away. The water wheel and pipes can still be seen at the river side but they, sadly, are slowly deteriorating. To celebrate this completion John and Julia, who instigated the restoration and applied for grant money, hosted a very enjoyable get together at Manor Farm on Sunday

29th October. Brian gave us a wonderful talk on the now very sound, stone structure whose internal arches held the tank aloft. Its importance to a village without water, high up in limestone country - where the women had to trek down to the river where nearby there was a spring - to bring back full buckets - all the way up the steep hillside - was without question a massive help to their lives.



Allied to this the local charity Aquabox talked about their work providing clean drinking water kits to remote parts of the world today. Let us not forget the importance of clean water for human life itself.

We obviously need to keep warm in our climate especially with all this wet weather we have been having up here for weeks and weeks now. Some logs are available from Sarah. As with all our energy problems up here we have to reflect on what fuels we are using but, essentially we have very little choice.

Christmas is fast approaching, bringing joy to many and panic to

those who need to buy presents, food and make other preparations. The select band of elderly members of our community are looking forward to sitting down to their annual Christmas Dinner in the Cock and Pullet on the 7th December. Thank you to the village and to Kath for enabling this to happen.

There will be a Nativity Procession this year leaving the Church at 4 pm on Sunday 17th December. This will wend its way up the village street stopping for carol singing at various places until reaching the village hall for mulled wine and mince pies. On Christmas Eve at 6pm there will be a family friendly service in our lovely decorated church.

We now say welcome to new people who have come to live in the village at Beech Croft. They are Amanda and Cornelius and we hope they will be very happy here.

Finally we wish you all a very happy Christmas and enjoyable New Year.



Puzzle Corner



Christmas Quiz

1. What is the first name of Scrooge in the novel A Christmas Carol?
2. How do you say Merry Christmas in Spanish?
3. What colour are the berries on mistletoe?
4. 26th December is also known as which saint's day?
5. On the seventh day of Christmas, what does my true love give to me?
6. Which country gives Britain a Christmas tree each year as a thank you for support during World War II?
7. Name the sweet bread loaf which is traditionally eaten during Christmastime in Italy?
8. What kind of dessert is referred to in the carol We Wish You a Merry Christmas?

9. What do they call mulled wine in Germany?

10.. What collective had a hit in 1984 with Do They Know It's Christmas?

11. Stille Nacht is the German name for which traditional song, associated with Christmas?

12. In Away In A Manger, what are the cattle doing?

Answers on last page.

Bakewell and Ashford Film Society

WHAT'S LOVE GOT TO DO WITH IT? (2022 PG 13)

**SUNDAY DECEMBER 10TH
2023**

**7.30 pm at the Medway Centre,
Bakewell**

How do you find lasting love in today's world? For documentary-maker and dating app addict Zoe (Lily James), swiping right has only delivered an endless stream of Mr. Wrongs to her eccentric mother Cath's (Emma Thompson) dismay. For Zoe's childhood friend and neighbour Kaz (Shazad Latif), the answer is to follow his

parents' example and opt for an arranged (or "assisted") marriage to a bright and beautiful bride from Pakistan. As Zoe films his hopeful journey from London to Lahore to marry a stranger chosen by his parents, she begins to wonder if she might have something to learn from a profoundly different approach to finding love.



BASH's aim is to meet in a friendly atmosphere showing a variety of new, classic and foreign films. We give an introduction to each film and refreshments are served during an interval. Accessibility is important to BASH: The Medway Centre is wheelchair friendly and we provide film subtitles, where available, and a hearing loop. You can join BASH Film Society via our website, sign up on the night or you can telephone the membership secretary Joy Thrower 01629 814863. Membership for the year is £24.00 As a member of the film society you will also be entitled to borrow for two weeks any DVD or BluRay from our ever growing library of films (see www.bashfilms.org.uk). We look forward to welcoming you on **Sunday December 10th** at 7.30pm.



**Please Contact Andrew For
All Of Your Motoring Needs**

07538441006
drewsgarage205@gmail.com

SHELDON- DE45 1QS



Drewsgarage

Mobile Gentlemen's & Boys' Barbers



Experienced & reliable.

At a time and place to suit
your busy life.

Teresa

TEL: 07974960209



**TEVE WALTON
ELECTRICIAN**

- Efficient and Reliable
- No Job Too Small
- All Work Fully Guaranteed
- PAT Tests

Email
stevewaltonelectrical@googlemail.com

Mobile
07766557691

Hathersage

Ashford in the Water Parish Council

For information about the village
and surrounding area, and the
activities of the Parish Council,
please visit

[http://www.ashford-in-the-water-
pc.gov.uk](http://www.ashford-in-the-water-pc.gov.uk)



News from Ashford War Memorial Institute

Textile recycling bank

There is now a textile recycling bank in front of the Institute and in aid of the Air Ambulance Service. The Air Ambulance receive 100% of the profits from donations. The bank accepts Clothing, Accessories, Paired Shoes, Linen and Handbags but NOT pillows, rugs, duvets, glass or metal. Please do not leave donations outside the bank. If the bank is full, the team can be contacted on 0300 30 45 999 and they will arrange for it to be emptied.

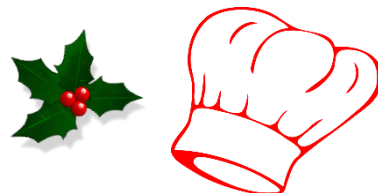
Flexible, part time job in the heart of the village

Ashford War Memorial Institute is looking for a new bookings secretary. The hours are flexible and vary according to how busy the Institute is. The Trustees have agreed that this should be a paid position. It would suit someone who wants some extra remuneration and enjoys being part of the village. The committee is friendly and helpful. If you are interested and would like to hear more details please contact either Caroline Hanson on 07855357056 or carolinehanson2@sky.com or Katrina Mayson on 07855744191 or katrinab@maysonuk.com

Request

A request from the Institute to whoever has borrowed any of the brown trestle tables (there are 5 missing) to ask that they return them for the other Members and Hirers to use. Many thanks in anticipation.

POT LUCK



White

Chocolate Ganache

Simple to make and can be used to fill or top a cake, or as a sauce.

Ingredients:

200ml whipping cream

420g white chocolate, finely chopped

1. Put the chopped white chocolate in a medium sized microwave-safe mixing bowl.
2. Heat the cream in a small saucepan until just boiling.
3. Pour the cream over the chocolate and leave to stand for 2 minutes so the chocolate can soften.
4. Stir until smooth. If the chocolate has not all melted, place bowl in the microwave, heat for 30 seconds, and stir again until smooth.
5. Leave it to cool until it reaches the desired consistency. To use as a sauce or to coat a cake as a glaze, leave to cool until it thickens slightly. Leave it to thicken for longer for filling a cake or piping. If it sets too hard, soften for 30 seconds in the microwave and stir well.

Baslow Health Centre – Church Lane, Baslow

www.baslowhealthcentre.co.uk

Appointment Times: Clinicians are still available for consultations and medical advice. Please contact the surgery and a GP or Nurse will call you back to discuss your concerns and if necessary arrange to see you in person. Many problems can be dealt with over the telephone.

Patient Online: Have you registered to use the online service? This allows you to book or cancel appointments online (during normal service) and order your repeat medications. You can also request access to your Summary Care Record, and Detailed Coded Data contained within your medical records. You can also look at your test results.

Telephone Numbers:

Reception: 01246 582216 District Nursing Team: 01332 564900

Health Visitor: 01246515100

Normal Surgery Opening Times Monday, Tuesday, Wednesday, Thursday & Friday 08:00am to 6.30pm, (Closed Bank Holidays) (*Phones 8.00am – 6.30pm Mon to Fri*)

Ordering Repeat Medication - You can order repeat medications in the following ways:

- In writing or with our on-line access service
- Return your repeat request form to surgery by Post

Please allow three working days before collection and collect between 8am and 5pm

Prescriptions can be collected from reception inside the surgery.

Samples – if you need to leave a sample with us please ensure it is labelled with your name and date of birth and returned in a bag if provided either through the letterbox or at reception.

Test Results – **Please ring for test results after 2.30pm** as we do not receive test results back from the hospital until lunchtime.

For Urgent Calls when we are closed, please call 111

BAKEWELL MEDICAL CENTRE

www.bakewellmedicalcentre.co.uk 01629 816636

Normal Surgery Opening Times:

Monday to Friday 8am to 6.30pm (unless it's a bank holiday)
We do not close for lunch.

Closed

The surgery will be closed for training at 1.30pm on the 2nd Wednesday of each month.

Whitworth Urgent Treatment Centre at Whitworth Hospital is open from 8am to 8pm 7 days a week.

Please remember if you need to seek medical advice and the surgery is closed contact **111**.



Need help or advice?

Sarah Dines
Member of Parliament for
Derbyshire Dales

You can write at any time to:

Sarah Dines MP, House of Commons
London, SW1A 0AA

Phone: 020 7219 6660

Email:
Sarah.dines.mp@parliament.uk

Website: www.sarahdines.org.uk

**Sarah Dines MP, working hard for
Derbyshire Dales**

Christmas Quiz Answers

1. Ebenezer 2. Feliz Navidad 3. White 4. St. Stephen's Day
5. 7 swans a-swimming 6. Norway 7. Panettone 8. Figgy pudding
9. Glühwein 10. Band Aid 11. Silent Night 12. Lowing



The deadline for the January magazine is 27th December 2023.

Please send any poems, photos, articles, recipes, puzzles, thoughts or reminiscences to stone.mary@sky.com. Thank you!