

**PARISH MAGAZINE**  
**Ashford in the Water**  
**and Sheldon**

<https://ashfordparishchurch.com>

**April 2023**



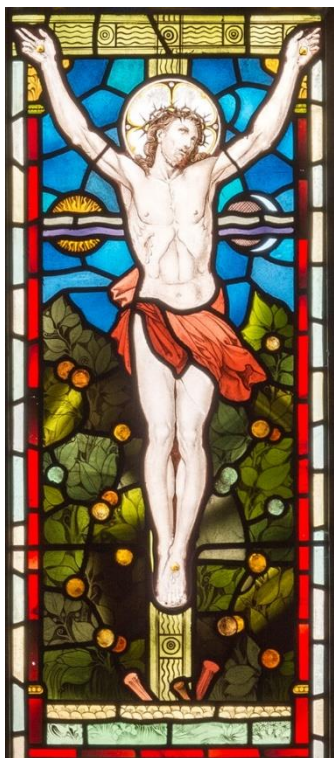
**ASHFORD SERVICES**

02 April	Palm Sunday	9.40am	Sung Eucharist – service starts at the Sheepwash Bridge.
07 April	Good Friday	2.00pm	An Hour by the Cross
09 April	Easter Day	9.45am	Sung Eucharist with mini-eggs for the youngsters
16 April	Easter 2	9.45am	Sung Eucharist
23 April	Easter 3	9.45am	Sung Eucharist
30 April	Easter 4	10.00am	Benefice Eucharist in Ashford.

Funeral	31 March	Peter Sheldon
---------	----------	---------------

**SHELDON**

09 April	Easter Day	9.00am	Holy Communion
----------	------------	--------	----------------



## **SERVICES AT HOLY TRINITY FOR HOLY WEEK AND EASTER**

**Palm Sunday** 2<sup>nd</sup> April 9.40am  
Sung Eucharist – starting at  
The Sheepwash Bridge

**Good Friday** 7<sup>th</sup> April 2.00pm  
An Hour by the Cross

**Easter Day** 9<sup>th</sup> April 9.45am  
Sung Eucharist with mini eggs  
for the youngsters

## **A Hymn for Easter**

Amazing grace how sweet the sound  
That saved a wretch like me  
I once was lost but now am found  
Was blind but now I see.



## Dear Friends

As we prepare for  
the Coronation of  
His Majesty King



Charles III on Saturday 6<sup>th</sup> May we are thinking about the ritual and traditions of Coronation that go back centuries and are full of symbolism and meaning around service, duty, representation and upholding the call to unite our Nations as a United Kingdom with the Commonwealth of Nations. There will be a scaling back from some of the things that were present before in such a Service whilst other things will be added to reference King Charles's passion of inclusion, community, service and environment.

One of the most sacred moments happens away from the public eye and before the act of crowning when the Monarch is anointed on the forehead, chest and hands to symbolise being called to serve the virtues of God through duty, compassion, truth, humility and courage, in recognising always that it is by the power of God that a King or Queen reigns, and not by their own power.

Jesus was anointed by a woman who came into the room he was visiting and poured expensive oil over him, wiping the oil from his

feet with her hair. He saw this very personal act of devotion as a sign of his impending death when he would consecrate himself on the Cross of Good Friday for the world and the forgiveness of sin, the hope of healing and the opportunity for the reign of God's love to begin.

After his death Jesus was hurriedly buried with little time to observe the very important burial customs which included anointing his body with costly oils. It was when some of his women companions returned to fulfil these customs on the third day of his death that they found the stone against the tomb rolled back and the tomb empty because Jesus had risen, as he had foretold.

The oil of anointing Kings and the oil of sealing a relationship between God and his adoptive children in Baptism/Christening link us to the life Jesus came to share with us that is sealed in love, compassion, care and service of one another. It is perhaps not a coincidence that on the Monday of the Coronation Weekend we are being encouraged to think about volunteering, to reflect the giving of time and talent in the service of others, in thanksgiving for what we receive.

Easter tells the story of Jesus entering the raw emotions of our world – becoming one with us in all

of life's experience and helping us to turn the series of anointings as a result of Good Friday experiences into the anointing of new life, healing, renewal and hope as we embrace the offer of new life and being in God through Jesus.

In the midst of sadness and grief in the world we see the shoots of new life and hope that we seek to nurture through a spirit of compassion, generosity and love. Know that Easter anoints you and blesses you in the love that God has for, and shares with and through you.

With love and prayers

Canon Tony

## **Ashford in the Water Parish Council**

For information about the village and surrounding area, and the activities of the Parish Council, please visit:

<http://www.ashford-in-the-water-pc.gov.uk>

## **The Hall Orchard Playing Field and Recreation Area**

The parish council have received several complaints from parishioners regarding dog fouling in the Hall Orchard. Despite repeated polite requests to dog owners to clean up after their pets, the presence of dog excrement continues to pose a health hazard.

The Hall Orchard has therefore been placed under a Public Spaces Protection Order. Dogs must be kept on a lead at all times and signs have been erected so that the public are aware of this restriction. Any person breaching the order will be subject to a fixed penalty of £100.00, with a maximum penalty of £1,000.00.

Any instances of dog fouling or anti-social behaviour can be reported as follows:

By telephone: 01629 761100

Online:

[pspo@derbyshiredales.gov.uk](mailto:pspo@derbyshiredales.gov.uk) or  
[www.derbyshiredales.gov.uk/PSPO](http://www.derbyshiredales.gov.uk/PSPO)

Thank you for your cooperation.

Ashford in the Water Parish Council

# Church and Village 'Virtual Visitor Guide'



We will shortly be installing a 'Virtual Visitor Guide' in the church that will enable visitors to view and browse information about the church and the village interactively, on their own smartphones.

Since the church is open to visitors every day, is centrally located and accessible, and has many visitors coming through its doors each year, we hope this will be useful for the church and the community, as well as for visitors.

This free-to-use system does not connect to the internet (hence is completely secure), and does not require mobile data connectivity. As you know, this can be patchy in Ashford, and sometimes non-existent inside the church building.

Instead, the content is downloaded via a dedicated local-area Wi-Fi signal in the church. After connecting to this, users connect to the Guide by scanning a QR code with their phone camera.

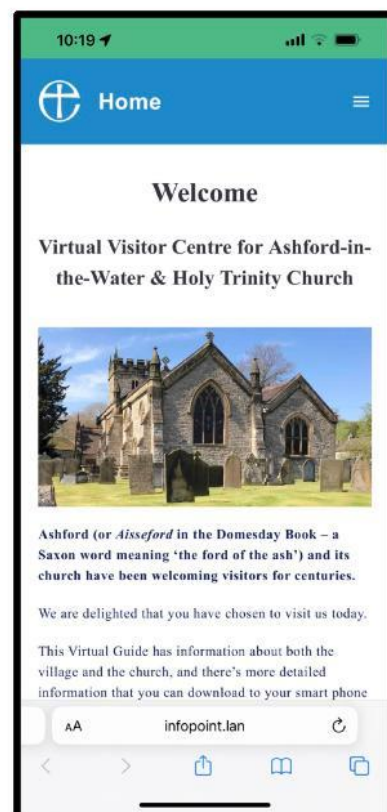
It is designed to be used completely unattended.

It includes some information about the village organisations, hospitality venues, and shop, which has been mostly taken from the respective websites. Please let me know if you'd like to revise any of this.

We invite everyone to give it a go, and offer any feedback and suggestions.

Hope you like it!

Ian Pykett  
EMAIL: [i.pykett@btinternet.com](mailto:i.pykett@btinternet.com)







CELEBRATIONS IN ASHFORD-IN-THE-WATER

SUNDAY MAY 7<sup>TH</sup> 2023

9.45 AM. HOLY TRINITY CHURCH  
INFORMAL COMMEMORATIVE SERVICE

... and celebration of our community  
organisations and volunteers.

Memories or memorabilia from prior  
coronations welcome!

12.00 PM. WAR MEMORIAL INSTITUTE  
CELEBRATION LUNCH



*More details to follow!*



**TEVE WALTON  
ELECTRICIAN**

- Efficient and Reliable
- No Job Too Small
- All Work Fully Guaranteed
- PAT Tests

Email  
steve.walton.electrical@gmail.com

Mobile  
07766557691

Hathersage

**Hillsprings**

**LAUNDRY**

THE DALE, STONEY MIDDLETON,  
HOPE VALLEY, DERBYSHIRE, S32 4TF.  
www.hillsprings.co.uk E-mail: enquiries@hillspringslaundry.co.uk  
Telephone: 01433 631442

**AGENT FOR DRY CLEANING**

SERVICE WASHES      BED AND BATH LINEN

TABLE LINEN      WORKWEAR & OVERALLS

**IRON ONLY SERVICE**

UNIFORMS      SLEEPING BAGS

SPORTS KITS      DUVETS

Open Monday – Friday  
7am – 5pm

Collection and delivery available  
within a 20-mile radius of Stoney Middleton

**Mobile Gentlemen's &  
Boys' Barbers**



Experienced & reliable.  
At a time and place to suit  
your busy life.

Teresa  
TEL: 07974960209

***Drew's Garage***

SERVICING, REPAIRS  
and TYRES



**Please Contact Andrew For  
All Of Your Motoring Needs**

07538441006  
drewsgarage205@gmail.com

**SHELDON- DE45 1QS**



Drewsgarage

## Farming News



We are very busy calving at the moment and the sheds are getting very full. Hopefully within the next two to three weeks the weather will change and we can get a few of the older calves outside. Last summer we put up another building which houses 70 of last year's calves, and calving pens down the other side. It's strange as we don't seem to have any more cattle but we are still short of space!

Last weekend we had 7 new born calves each morning so we had to do a lot of juggling to allocate a pen for each pair. Once a cow has calved, we like to put her and the calf in an individual pen for at least two days so we can make sure the calf is drinking. You would be surprised how many calves don't find their mothers teat to suck or find it difficult to suck if it's a big teat or a very small teat.

We have found the best method to get them to suck is to give the calf a bottle of powdered calf milk so it gets the taste of the milk then put it straight onto the mother's teat. This sounds easy but very often the mother can be very protective of her calf especially for the first week or so and she can be

quite nasty trying to butt you or even charge you. We try to get her into the cattle crush which keeps her from moving about and so the calf has half a chance of latching on. The first 24 hours of life are critical for the calf to have at least a small amount of colostrum to get a good start in life. It has been proven that milk cows give more milk and beef cattle fatten more quickly if they have had at least 4 litres of colostrum within 24 hours of birth.

Once the cow and calf have bonded and the calf is sucking the pair are put into pens of up to ten cows and calves. However, we still have to look at each calf morning and night to make sure it hasn't got either scours or pneumonia. Small calves are very prone to these illnesses particularly if the weather is variable, i.e. cold one night and warm the next. Modern, large buildings also don't help as ventilation is always poor and can be draughty, cold or too stuffy. So really good stockmanship is very important at this stage.

The calves are tagged with a yellow plastic eartag with our herd number and the calf's individual number; the bull calves are castrated with a rubber ring and we also give each calf an injection to provide immunity from *Pasteurella* and clostridial diseases. Each calf is



recorded with its date of birth, sex, breed and dam's ear tag number so when they go outside we know which calf belongs to which cow.


## WI

On February 24th thirteen WI members visited the garden of Paul and Ruth Peat at Oakerthorpe near Alfreton. Paul showed us round their woodland garden which was full of many varieties of snowdrops. We were delighted and amazed by the stunning displays. After our tour, we were welcomed inside the house where we sat round the kitchen table and enjoyed a delicious lunch of soup, bread, scones and cake all homemade by Paul.



We welcomed Mandy Coates to our March meeting. Mandy gave a most interesting talk on White Watson. Born in 1760, White Watson lived in the Bath House in Bakewell. He was a geologist and fossil collector with

a particular interest in Ashford Marble. Mandy's illustrated talk taught us much about the wealth of minerals in the area as well as life here at the end of the 18th century.

Our speaker next month is Jennifer Walker who will talk about  Bees. Please note this will be on Thursday April 6th at 7:15 pm.

## SHELDON JOTTINGS



The clocks have been put forward and the days are lengthening – Easter is almost upon us! The cold days and snow during March, which provided its usual wonderful scenic delights and during which Sheldon was inaccessible for a couple of days, put a brake on the burgeoning plant life in the gardens. 'Experts' suggest that this means that some of the earlier plants will be held back and with the other April plants flowering at the same time we shall have an 'explosion of blooms' at Easter! We have noticed that, as usual, the lovely show of daffodils at the entrance to Ashford are out well before those in our village due no doubt, to Ashford being at the bottom of the hill and one or two degrees warmer than Sheldon.

One of the joys of April is the return from wintering in warmer climes of the swallows and house martins to nest and bring up their young in our village. The first sightings are usually towards the beginning of the month with more arriving towards the end. These small

birds are surely the heralds of better weather and the natural wonders of spring and summer to come.

We were reminded recently that a mains water supply did not reach Sheldon until 1956, well within the lifetime of several residents. The village has always been a 'dry' village, its water originally coming from meres or small ponds which can still be seen outside one or two houses and filled with rainwater and run-off from roofs. In those times water was carried from the 'Pot Boil', a spring below Shacklow Wood next to the River Wye, and thus quite a haul up the hill!

Then in the early 1880's this water was pumped through a pipe, 600 feet up the hill to a tank at the top which stood on a 10 foot high base and then fed by gravity to the houses. During the three-quarters of a century that this system supplied water to the village there were numerous interruptions, mainly due to the difficulties experienced pumping water such a height uphill and the pump at the bottom of the hill by the Bobbin Mill breaking down. So eventually a man was employed to keep it going. Sometimes there was some annoyance from people living much further down the main street when they found there was little water left for them to use...

The base on which the tank stood has steadily deteriorated over the 100+ years since it was built. The tank itself was taken away many years ago, but now it is due to be restored. John H has managed to secure a grant to replace the missing capping stone,

rebuild any walls which are beginning to crumble at the edges and repoint the entire structure. The grant which has been approved through the 'Farming in Protected Landscapes' scheme and is supported by the Peak District National Park Authority will cover the costs and the work will take place during the summer.

This is tremendous news. So much of our cultural heritage has and is being lost over the years and becomes forgotten in the mists of time. Sheldon is a very special place and John is to be congratulated for his hard work in bringing this project to fruition and making it possible to restore and preserve this important slice of our historical past.

A Happy Easter to all in Sheldon and Ashford!

#### **DIARY DATES**

Tuesday April 18<sup>th</sup> – 7.30pm in Village Hall – Sheldon Parish Meeting AGM

#### **SERVICES AT SHELDON PARISH CHURCH IN APRIL AND MAY**

9<sup>th</sup> April Easter Day 9 am Holy Communion Canon Tony

30<sup>th</sup> April 9 am Holy Communion Canon Tony

14<sup>th</sup> May 9 am Coronation Thanksgiving Service Canon Tony

## An Introduction to your local milk delivery service

### Bakewell Dairy

We can deliver all your milk, eggs and cream requirements.

We deliver Monday / Wednesday / Friday

Pint Bottled Semi Skimmed Milk (Peak District Dairy) 60p	Pint Bottled Whole Milk (Cox Brothers Great Longstone) 60p
Eggs ½ Dozen free range eggs £1.10	Pint Bottled Skimmed Milk (Peak District Dairy) 60p
Cream ½ pint Double Cream (Longley Farm) £1.20	Cream ½ pint Single cream (Longley Farm) £1.10
Fruit Yoghurts (Longley Farm) 38p	Pint Fresh Orange Juice 75p
1ltr Carton Orange Juice £1.10	1ltr carton Cranberry £1.10

Please contact Colin on Phone / Text 07711 900030

Email [csjcolin@btinternet.com](mailto:csjcolin@btinternet.com)

## ***Chatsworth Plumbing & Heating Ltd***

- **BOILER INSTALLATIONS & GAS SERVICING**
- **LANDLORD CERTIFICATIONS**
- **INSTALLATION OF SOLID FUEL FIRED CENTRAL HEATING OR HOT WATER SYSTEMS**
- **INSTALLATION OF OPEN FIRES & SOLID FUEL FIRED APPLIANCES**
- **UNDERFLOOR HEATING**
- **SOLAR HOT WATER SYSTEMS**
- **BATHROOM INSTALLATIONS**

Friendly, local and prompt service by qualified personnel.  
Customer satisfaction a priority.

For a free consultation or quotation please phone:

**Tel: 01629 733 188**

**Mobile: 07739 797 644**





# PENROSE INTERIORS

Freshen up your home ready for Spring!



Interior Design – Reupholstery – Headboards - Curtains & Blinds –  
Poles & Tracks – Wallpaper - Fabric - Paint – Giftware & Accessories



  Find us on Instagram & Facebook

A: Broome's Barns, Pilsley, Nr Bakewell, Derbyshire, DE45 1PF T: 01246 583444

E: [sales@penroseinteriors.co.uk](mailto:sales@penroseinteriors.co.uk) W: [www.penroseinteriors.co.uk](http://www.penroseinteriors.co.uk)

Opening Times: Monday – Saturday 10am – 5pm

Located in Pilsley village, near the Chatsworth Farm Shop and next to the Devonshire



**Bakewell and Ashford Film  
Society (BASH)**

**CODA (2021 Cert.PG13)**

**SUNDAY April 16th 2023**

7.30 pm at the Medway Centre,  
Bakewell



*CODA (Child of Deaf Adults) features a deaf family in Gloucester, Massachusetts. As a Child of Deaf Adults and the only hearing person in her family, high school senior Ruby Rossi always has a lot on her plate. Indeed, trying to juggle back-breaking work on her father's fishing boat, schoolwork, social life, and the family's expectations can be too much for a teenager. But do her parents know Ruby loves to sing? When Ruby signs up for the school choir, singing becomes a passion, and suddenly, the talented young girl finds herself at a crossroads: should Ruby spread her wings and follow her dreams, or should she keep fighting everyday battles as a member of the proud Rossi clan?*

BASH meets once a month, usually on the 2<sup>nd</sup> Sunday in the month, from September to June in the friendly atmosphere of The Medway Centre,

Bakewell to show a variety of new, classic and foreign films. However, due to Easter falling on the second Sunday this year our film will be on **3<sup>rd</sup> Sunday in April**. There will be an introduction to each film with refreshments served during the interval. Accessibility is important to BASH. We use a wheelchair friendly building with film subtitles and a hearing loop. You can join BASH Film Society via our website, sign up on the night or you can telephone the membership secretary Joy Thrower 01629 814863. As a member of the film society you will also be entitled to borrow for two weeks any DVD or BluRay from our ever growing library of films (see [www.bashfilms.org.uk](http://www.bashfilms.org.uk)). We look forward to welcoming you on **Sunday April 16th** at 7.30pm.

	<p><b>The Joinery Workshop</b> (Derbyshire) Ltd.</p> <ul style="list-style-type: none"><li>• Quality, purpose made joinery</li><li>• Doors, windows, fitted furnishings</li><li>• Made to measure</li><li>• Traditional &amp; contemporary</li><li>• Range of woods and finishes</li><li>• Estimate on request</li></ul> <p>01629 813633 07835238160 <a href="mailto:joineryworkshopltd@gmail.com">joineryworkshopltd@gmail.com</a> Or visit the workshop: Hassop DE45 1NW</p>
--------------------------------------------------------------------------------------	--------------------------------------------------------------------------------------------------------------------------------------------------------------------------------------------------------------------------------------------------------------------------------------------------------------------------------------------------------------------------------------------------------------------------------------------------------------------------------------------------------

## THE VILLAGE ALBUM



Thanks to Aileen Piper for these lovely snowy scenes in Ashford last month.



Hopeful signs of Spring in a corner of Ashford cemetery. Thank you to Jan Gibson.

*If you have old or recent pictures of Ashford or Sheldon that you could share, please send them to [stone.mary@sky.com](mailto:stone.mary@sky.com) Thank you!*

## POT LUCK

### Chocolate and Pear Tart

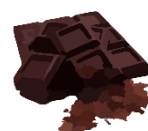
*(With thanks to Linda Foster for sharing this recipe from Jamie Oliver.)*



### Ingredients



Short crust pastry –  
enough to line a 24 cm tart tin  
125g ground almonds  
2 eggs  
125g butter, softened  
95g caster sugar  
185g dark chocolate, melted  
2/3 Conference pears, peeled, cored & quartered



To serve: Crème fraîche

### Method

1. Preheat oven to 190C Gas mark 5.
  2. Roll out pastry to ½cm thick and line tin – prick all over with a fork and leave in freezer to rest for at least 20 mins.
  3. Bake the pastry for approx. 10 mins, then remove and reduce oven temp. to 170C, Gas mark 3.
  4. Mix the almonds, eggs, butter and sugar together then stir in the melted chocolate whilst still warm.
  5. Pour the mixture evenly into the pastry case. Press the pears into the mixture.
  6. Bake the tart for 45 mins until the pastry is golden brown and the chocolate and almond mixture is firm.
- Serve warm with crème fraîche.

## PUZZLE CORNER

### Easter Quiz



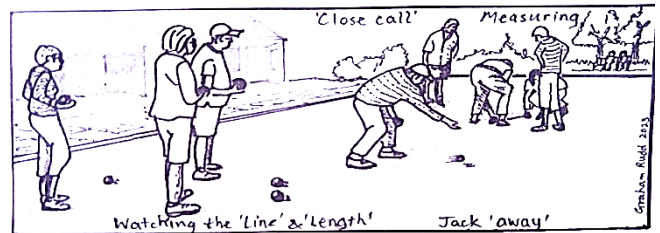
1. Which Roman governor of Judea ordered the death of Jesus?
2. How much was Judas paid to betray Jesus?
3. What role did Simon of Cyrene play in the Easter story?
4. Where was Jesus crucified? The name means 'place of the skull'.
5. In which garden at the foot of the Mount of Olives was Jesus arrested?
6. Which prisoner was released instead of Jesus?
7. What is the English translation of the words "Eli, Eli, lama sabachthani", spoken on the cross by Jesus?
8. What was written on Jesus' cross?
9. Who was the first person to see Jesus after the Resurrection?

10. Which apostle was absent when Jesus appeared to the group and doubted the Resurrection?

*Answers on the last page.*

### Baslow Bowls Club

#### Crown Green Bowling



#### Come and join us

Great way to keep active and make new friends

No partner required or specialist kit

#### What's the offer?

- ❖ Half price membership
- ❖ Three sessions of free coaching
- ❖ Beginners guide to crown green bowls
- ❖ Club bowls available for your use
- ❖ Free onsite parking

#### Free taster sessions

**Dates:** Sun 7 May or Sat 13 May

**Times:** 10:30am or 11:30am

**Where:** Baslow Sports Field DE45 1SP

**To book:** Call Graham on 07730 359226 or email

[bbc.baslow@gmail.com](mailto:bbc.baslow@gmail.com)

[www.baslowbowlsclub.co.uk](http://www.baslowbowlsclub.co.uk)

## **Baslow Health Centre – Church Lane, Baslow**

[www.baslowhealthcentre.co.uk](http://www.baslowhealthcentre.co.uk)

**Appointment Times:** Clinicians are still available for consultations and medical advice. Please contact the surgery and a GP or Nurse will call you back to discuss your concerns and if necessary arrange to see you in person. Many problems can be dealt with over the telephone.

### **Telephone Numbers:**

Reception: 01246 582216      District Nursing Team: 01332 564900

Health Visitor: 01246515100

**Normal Surgery Opening Times** Monday, Tuesday, Wednesday, Thursday & Friday 08:00am to 6.30pm, (Closed Bank Holidays) (*Phones 8.00am – 6.30pm Mon to Fri*)

For Urgent Calls when we are closed, please call 111

## **BAKEWELL MEDICAL CENTRE**

[www.bakewellmedicalcentre.co.uk](http://www.bakewellmedicalcentre.co.uk) 01629 816636

### **Normal Surgery Opening Times:**

Monday to Friday 8am to 6.30pm (unless it's a bank holiday)  
We do not close for lunch.

### **Closed**

**The surgery will be closed for training at 1.30pm on the 2<sup>nd</sup> Wednesday of each month.**

**Whitworth Urgent Treatment Centre** at Whitworth Hospital is open from 8am to 8pm 7 days a week.

Please remember if you need to seek medical advice and the surgery is closed contact **111**.



### **Easter Puzzle Answers**

1. Pontius Pilate
2. 30 pieces of silver
3. He was forced to carry Jesus' cross
4. Golgotha
5. Gethsemane
6. Barabbas
7. My God, My God, why have You forsaken me?
8. King of the Jews
9. Mary Magdalene
10. Thomas



**The deadline for the May magazine is 24<sup>th</sup> April 2023.**

**Please send any poems, photos, articles, recipes, puzzles, animal profiles, thoughts or reminiscences to [stone.mary@sky.com](mailto:stone.mary@sky.com).**

**Thank you!**

Stained glass photography from pages 1 and 2: Martin Crampin.



**Sarah Dines  
Member of Parliament for  
Derbyshire Dales**

You can write at any time to:

Sarah Dines MP, House of Commons  
London, SW1A 0AA

Phone: 020 7219 6660

Email:  
[Sarah.dines.mp@parliament.uk](mailto:Sarah.dines.mp@parliament.uk)

Website: [www.sarahdines.org.uk](http://www.sarahdines.org.uk)

***Sarah Dines MP, working hard for  
Derbyshire Dales***